

BROWNSVILLE, TEXAS

***GREENING AMERICA'S
COMMUNITIES***

FINAL PRESENTATION JUNE 21ST, 2017



OUR TEAM



DESIGN
TEAM



SPACKMAN MOSSOP ^{AND} MICHAELS
buildingcommunity WORKSHOP
TAMARA OROZCO

STAKEHOLDERS

General Services Administration (GSA)

U.S. Immigration & Customs Enforcement (ICE)

Dept of Homeland Security (DHS)

U.S. Customs & Border Protection (CBP)

International Boundary & Water Commission (IBWC)

Cameron County

Texas Water Development Board

Texas Southmost College

UTRGV

Brownsville Preservation Society

U.S. Army Corps of Engineers

City of Brownsville

TxDOT/ DOT

Metropolitan Planning Organization (MPO)

Ped/ Bike Advisory Board

Texas Commission on Environmental Quality

Community Development Corporation of Brownsville

Architects, Landscape Architects & Civil Engineers

Downtown Retail & Business Owners

U.S. Environmental Protection Agency (EPA)

Federal Transit Administration (FTA)

Federal Highway Administration (FHWA)

Transit Advisory Board

BMetro

Police Department

Brownsville Historical Association

Main Street Board

Residents

Art Community



PROJECT SITES



Sites / Sitios

- 1 Gateway Bridge
Puente Nuevo
- 2 Shoreline
Orilla
- 3A International Boulevard at Campus
Bulevar Internacional en el Campus
- 3B International Boulevard beyond Campus
Bulevar Internacional más allá del Campus
- 4 Performing Arts Center
Centro de artes escénicas
- 5 Market Square
Plaza del Mercado
- Public open space
Espacio público abierto
- Bodies of water
Cuerpos de Agua
- Major streets
Calles principales
- Border wall
Muro fronterizo

FIGURE 1 Illustrating the project area in relation to a larger context.

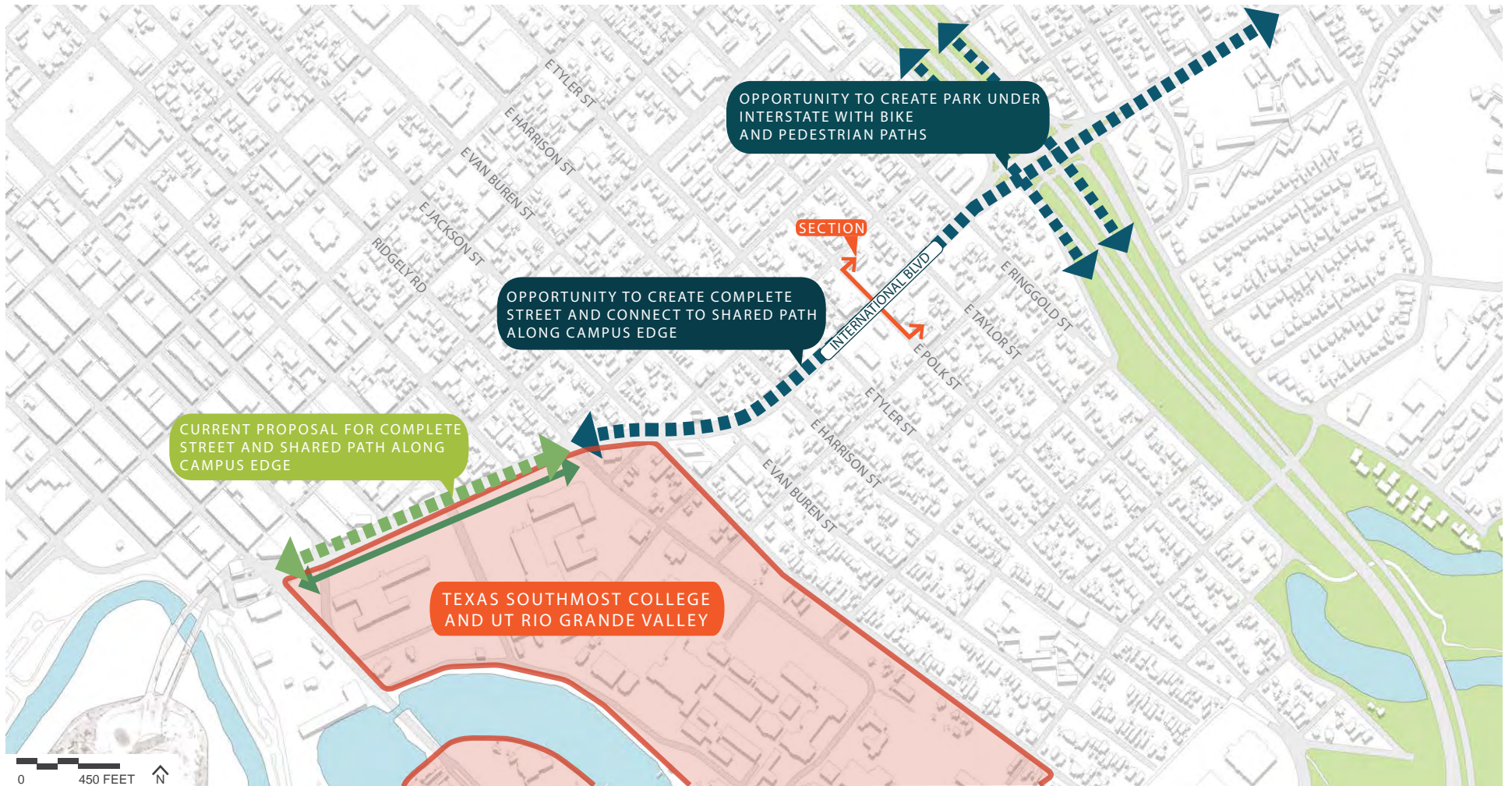


FIGURE 61 A diagram of opportunities to expand design concepts along International Boulevard.

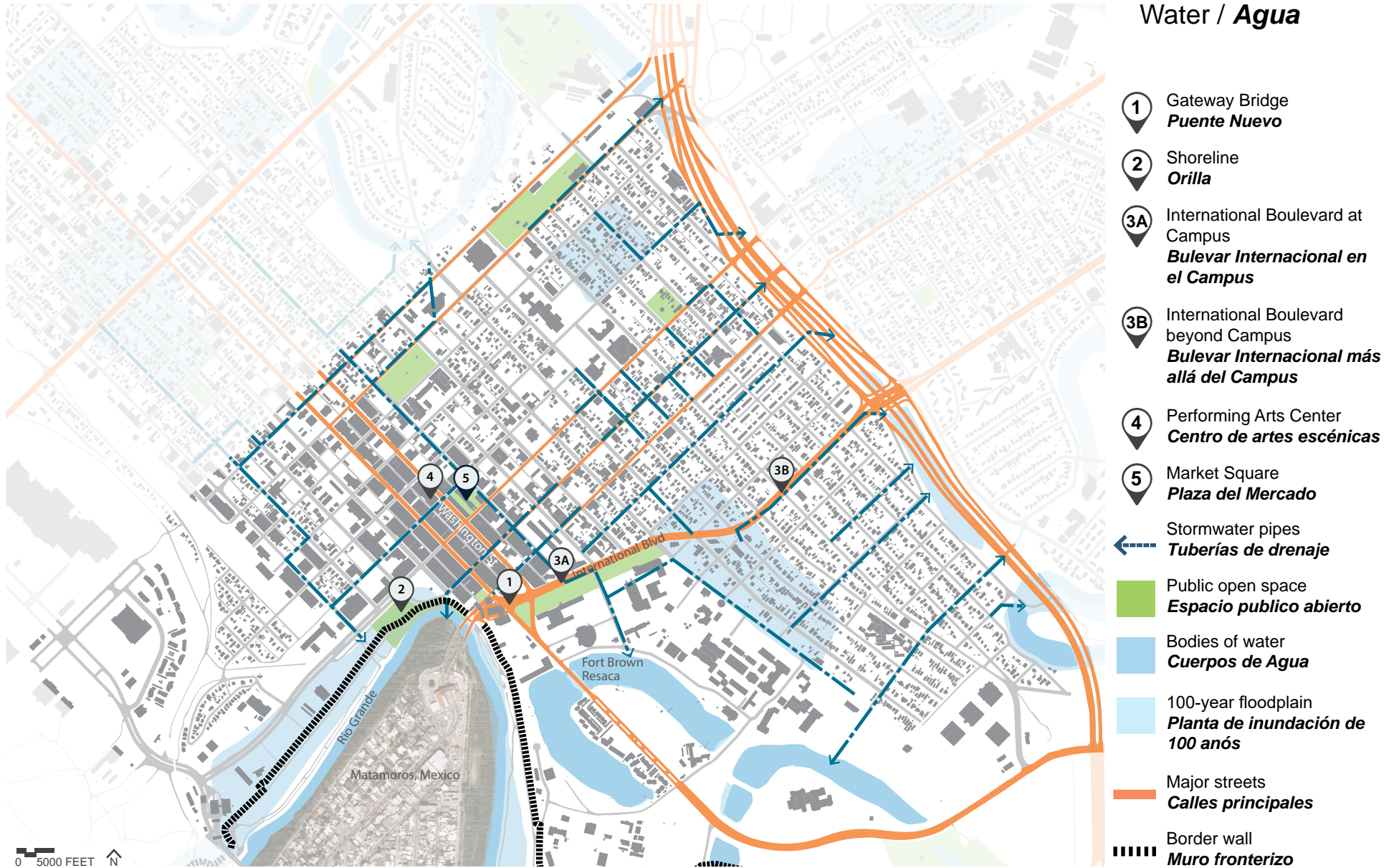


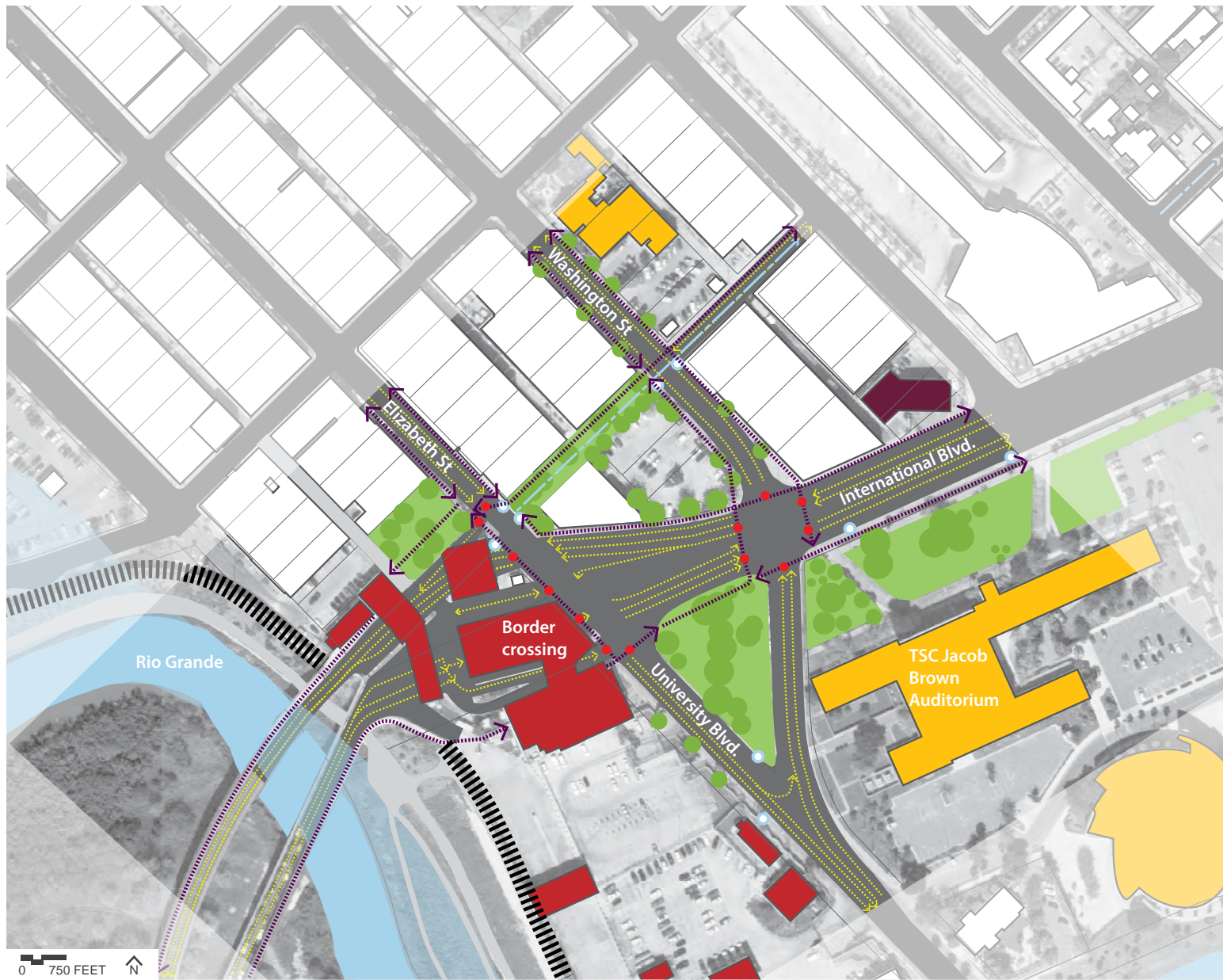
FIGURE 86 A water analysis diagram of the project sites.



Movement and Amenities/ *Movimiento y Servicios*

- ① Gateway Bridge
Puente Nuevo
- ② Shoreline
Orilla
- ③A International Boulevard at Campus
Bulevar Internacional en el Campus
- ③B International Boulevard beyond Campus
Bulevar Internacional más allá del Campus
- ④ Performing Arts Center
Centro de artes escénicas
- ⑤ Market Square
Plaza del Mercado
- Art and Culture
Arte y Cultura
- Grocery / convenience
Supermercado y tiendas
- Schools & Universities
Escuelas y Universidades
- Government
Gobierno
- Public open space
Espacio público abierto
- Bodies of water
Cuerpos de Agua
- Bike Routes
Rutas de bicicletas
- Bus Routes
Rutas de autobuses
- Bus Stops
Paradas de autobus
- Major streets
Calles principales
- Border wall
Muro fronterizo

FIGURE 88 A transportation route and prominent roadway diagram of the project sites.



Site 1: Gateway Bridge / Sitio 1: Puente Nuevo

- ← Vehicle Movement
Movimiento vehicular
- ← Pedestrian Movement
Movimiento peatonal
- Pedestrian/ Vehicular conflicts
Conflictos entre peatones y vehiculos
- Stormwater inlets
Entradas de drenaje
- ← Stormwater pipes
Tuberías de drenaje
- Art and Culture
Arte y Cultura
- Grocery / convenience
Supermercado y tiendas
- Schools & Universities
Equelas y Universidades
- Government
Gobierno
- Public open space
Espacio publico abierto
- Trees
Arboles
- Bodies of water
Cuerpos de Agua
- 100-year floodplain
Planta de inundación de 100 años
- Border wall
Muro fronterizo

FIGURE 9 An analysis of Site 1.

the participatory design process



the participatory design process



the participatory design process





FIGURE 64 *Best Practices for Commercial Developments along Highways.* This diagram shows best practices which could occur at site 3B. It focuses on shifting store frontages to the street edge and adding street trees and buffered planting. Parking lots move behind buildings and commercial entries are shifted to side streets where possible.

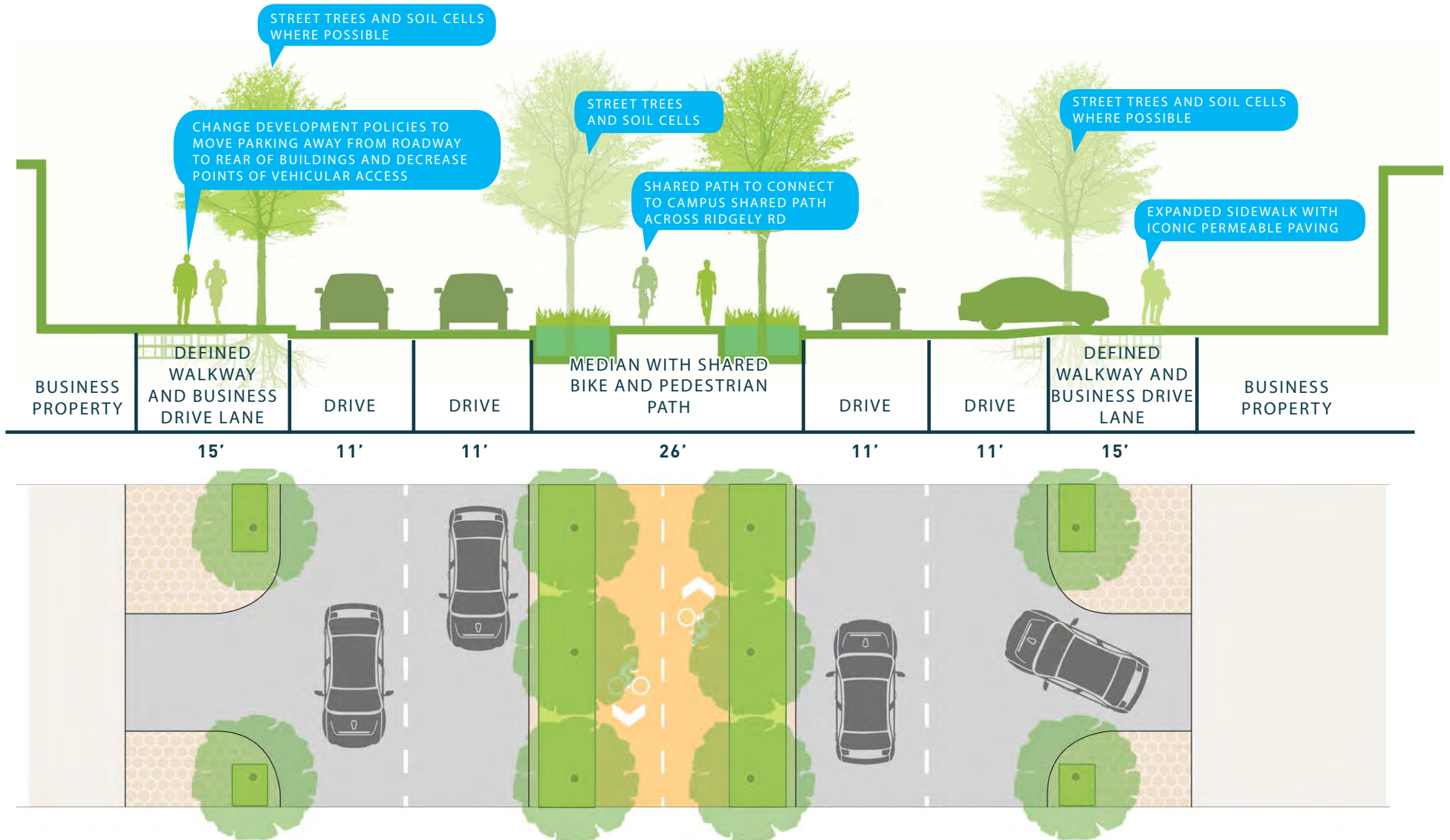


FIGURE 63 A proposed street design of International Boulevard between Tyler St. and Polk St.

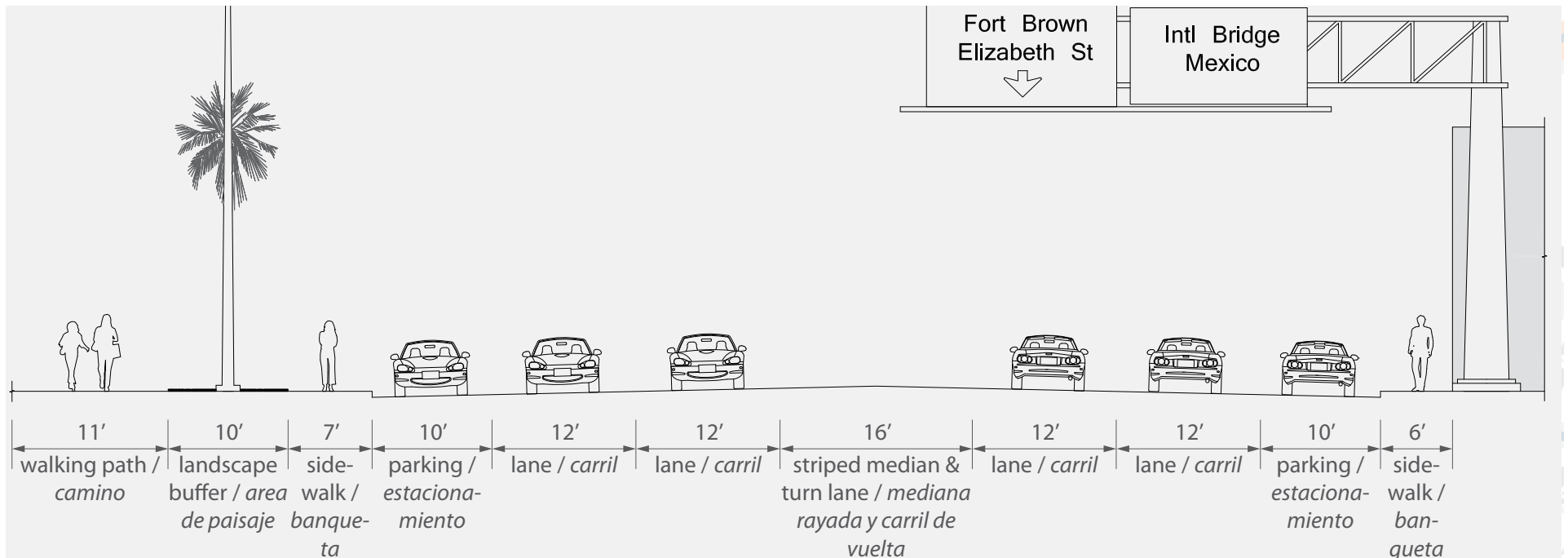


FIGURE 54 An existing section cut of International Boulevard, showing pedestrian paths, landscape buffer, and traffic lane dimensions.

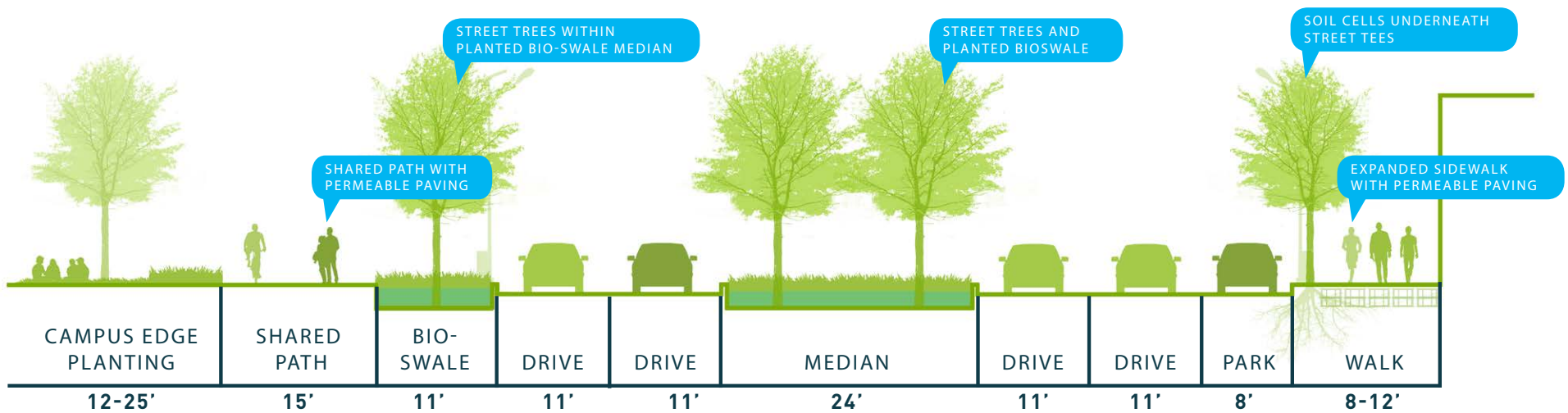


FIGURE 55 A proposed street design for site 3.



FIGURE 56 Before: A view of International Boulevard on Texas Southmost College campus.



FIGURE 57 After: A rendering of improvements on International Boulevard on Texas Southmost College Campus with new street trees in a planted bioswale and a shared path.



- 1 FLEXIBLE PLAZA SPACE WITH PERMEABLE PAVING
- 2 SLOW TRAFFIC AT ENTRANCE TO INTERNATIONAL BLVD. BY REDUCING LANE WIDTHS AND ADDING MEDIAN
- 3 PLANTED BERM AND WATER WALL WITH ENTRY SIGNAGE
- 4 PRIMARY WAITING ZONE AND PICK UP
- 5 TAXI PICK UP
- 6 TRAFFIC TABLES
- 7 DROP OFF AREA
- 8 STORMWATER PARK. A PARK WITH DETENTION BASINS AND LUSH PLANTING THAT MANAGE STORMWATER AND PROVIDE EDUCATIONAL OPPORTUNITIES FOR THE COMMUNITY
- 9 ENTRY PLAZA: A PLAZA THAT SLOWS AND DIRECTS TRAFFIC
- V PERSPECTIVE VIEW, FIGURE 37

FIGURE 36 A design proposal for Site 1.



FIGURE 37 *After: A view of the design proposal at International Boulevard from East Elizabeth Street toward Texas Southmost College, featuring a lush planted berm and unique welcoming signage incorporated into a water wall.*

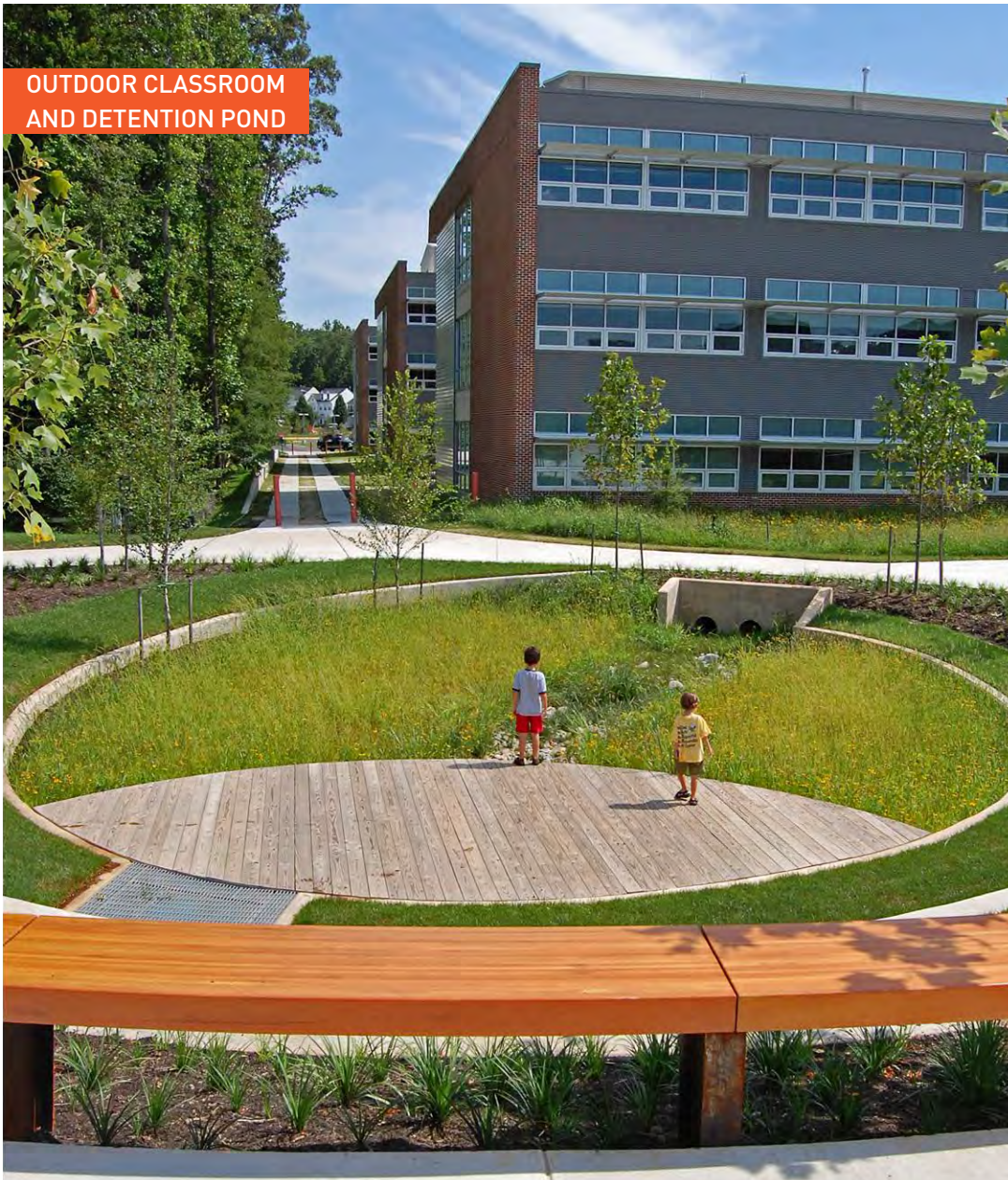


FIGURE 43 *Manassas Park Elementary School in Manassas Park, VA.*
PHOTO CREDIT *ASLA.org/2011awards*

Planted detention ponds store and slow stormwater runoff, mitigating flooding in the surrounding areas. Detention ponds also act as an educational feature, providing community members and students with an outdoor classroom or a space for social gatherings.



- ① ICONIC ALLEYWAY ENTRY SIGNAGE
- ② CONNECT TO 14TH STREET PEDESTRIAN PLAZA
- V PERSPECTIVE VIEW, FIGURE 79

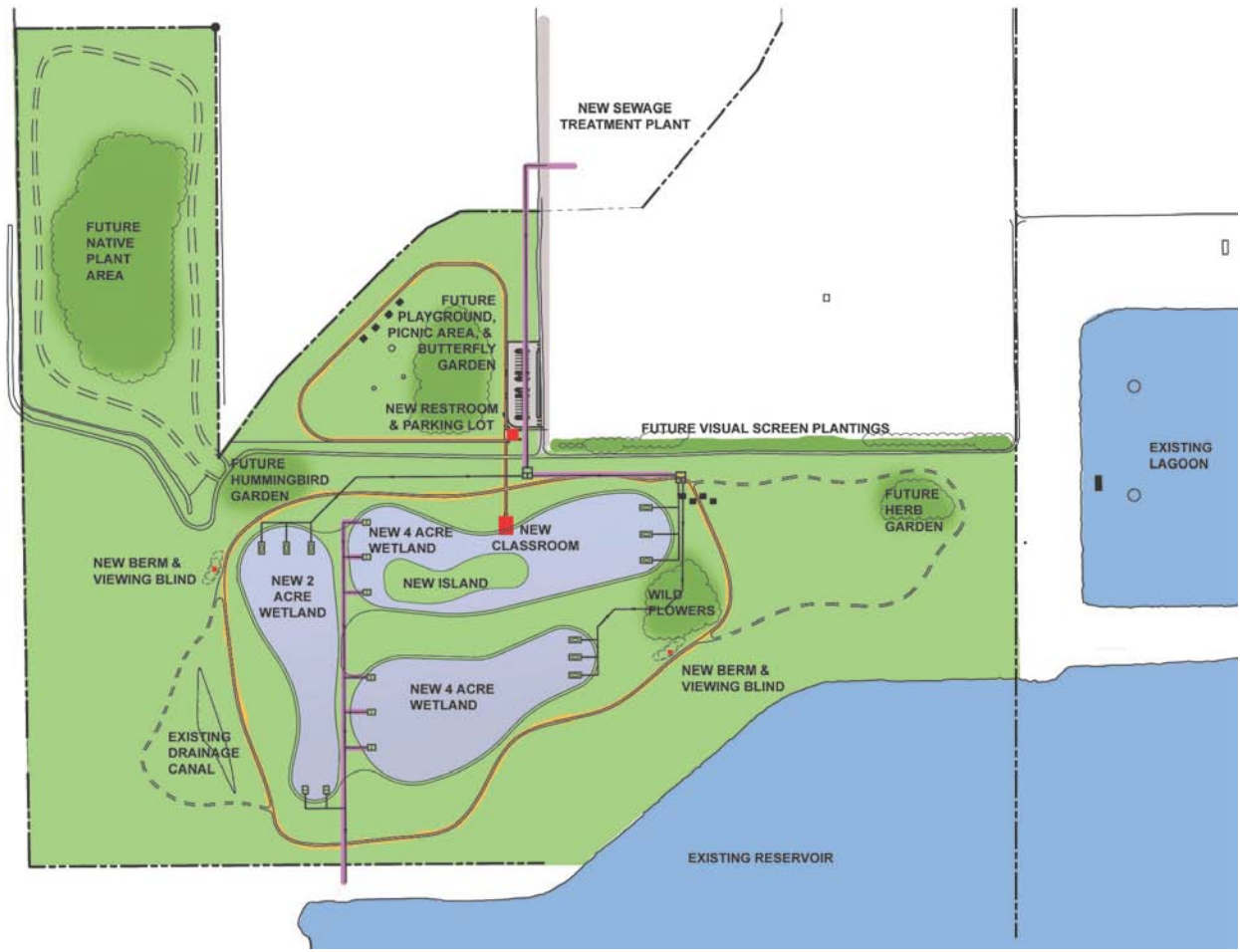
FIGURE 77 A design proposal for Site 5.



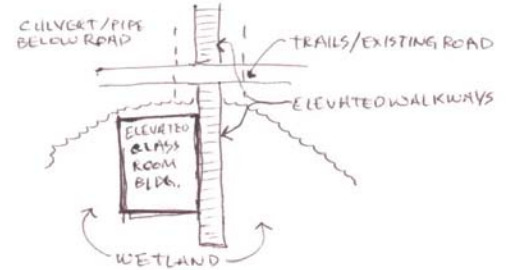
FIGURE 78 Before: A view of the alley between E Washington St. and E Adams St.



FIGURE 79 *After:* A rendering of the alley between E Washington St. and E Adams St. with paving improvements, new lighting and murals on building walls. Stormwater features for this site include permeable paving with gravel storage below ground and rain gardens.



② VISITOR FOLLOWS EFFLUENT AS IT FLOWS BELOW EXISTING ROAD INTO LARGE WETLAND RESERVOIR. ABOVE, VISITOR IS AT TRAIL HEAD ENTRY TO CLASSROOM



③ BRIDGES & ELEVATED OBSERVATION STATIONS TO EXPERIENCE WETLANDS FROM UNUSUAL PERSPECTIVES. SPECIAL ATTENTION PAID TO GRADING @ TOWERS FOR ACCESSIBILITY









RESERVED
PARKING



VAN
2 SPACES

2 SPACES

RESERVED
PARKING



VAN
2 SPACES

2 SPACES



LA FERIA RECREATION CENTER

1001

the participatory design process



CREATE A BIKE/ PEDESTRIAN CORRIDOR (COMPLETE STREET)

MATAMOROS, MEXICO

- + Enhance the existing park and create a destination point
- 1 Waterfront Overlook
- 2 Stormwater Collection Points: Rain garden filtration system cleans water before entering the

elements Observation Deck/ Tower



Option 2

- + Create an iconic riverfront park
- + Make more accessible connections to park
- + Complete Streets Strategies along surrounding streets
- 1 Waterfront Overlook
- 2 Stormwater Collection Points: Rain garden filtration system cleans water before entering the Rio Grande
- 3 Terraced rain gardens
- 4 Connections proposed open space

design Option 2

CONNECT TO COMMUNITY

BUFFALO BAYOU, HOUSTON