



2016 EPA Region 6
OKC Conference

Raymond Melton

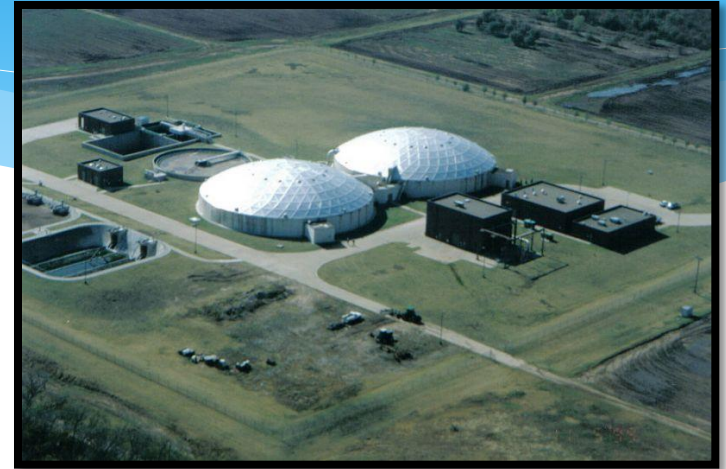
www.okc.gov/swq

Oklahoma City Storm Water Quality Program

What We Do

Storm vs. Sanitary Sewers

- * Sanitary sewer (wastewater) runs to a wastewater treatment facility before discharge to a creek or river
- * Storm sewer (rain water runoff) runs directly to a creek, river, lake, or other water body – usually without treatment

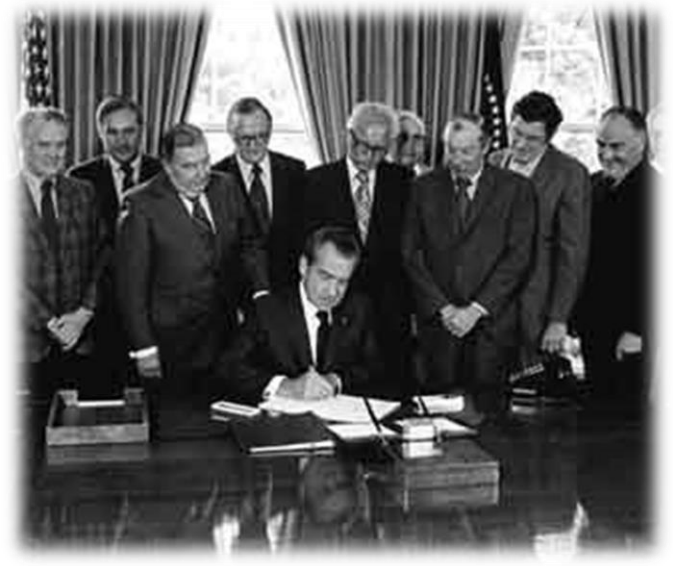


HISTORY of the Clean Water Act

1970 Congress and President Nixon formed the Environmental Protection Agency (EPA).

1990 President George H. Bush signed the Pollution Prevention Act.

June 1995 Storm Water Quality became a Division of the Public Works Department





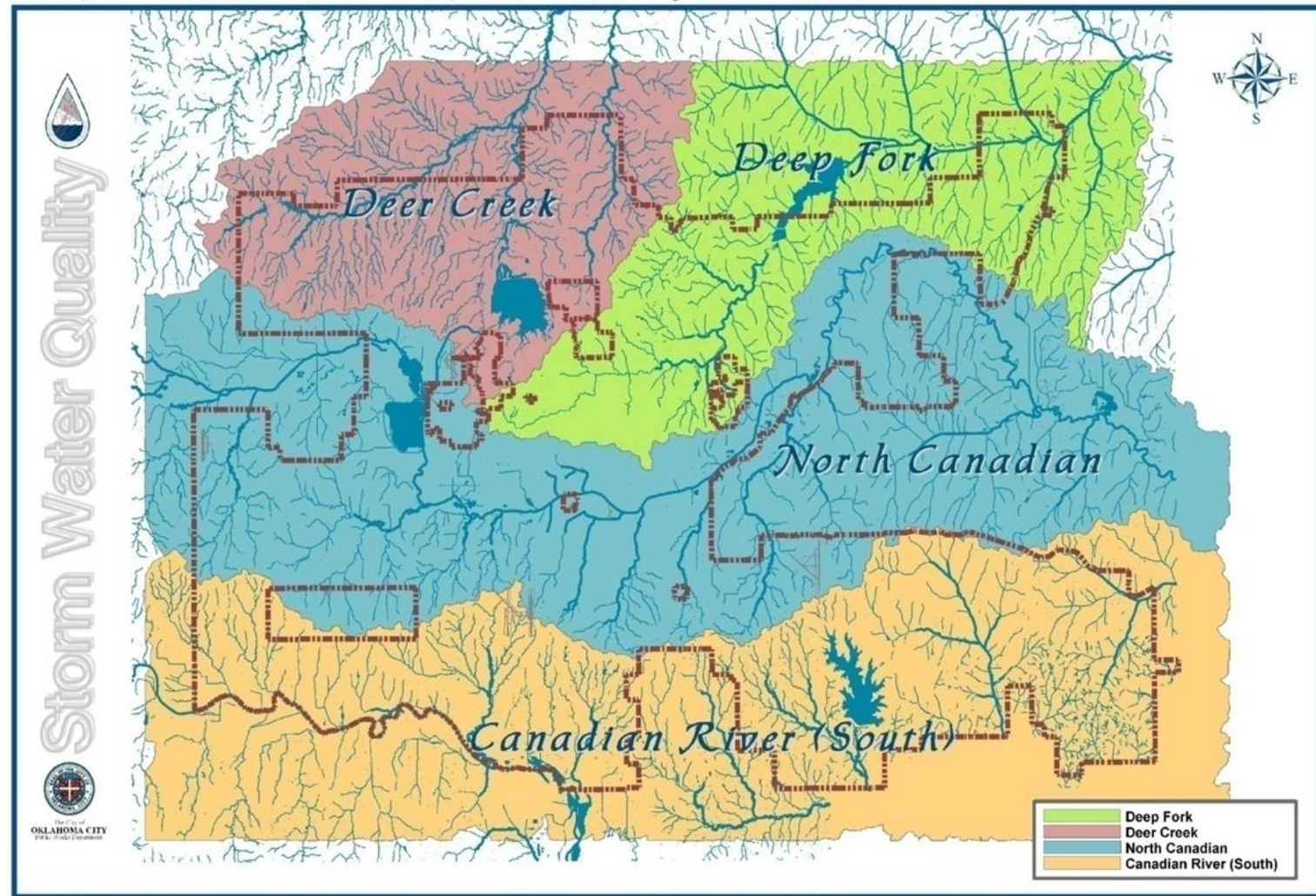
The City of Oklahoma City



Area: 620 square miles

Population: 610,000 (Metropolitan – 1,300,000)

City of Oklahoma City - Drainage Basins



PHASE 1 PROGRAM COMPONENTS

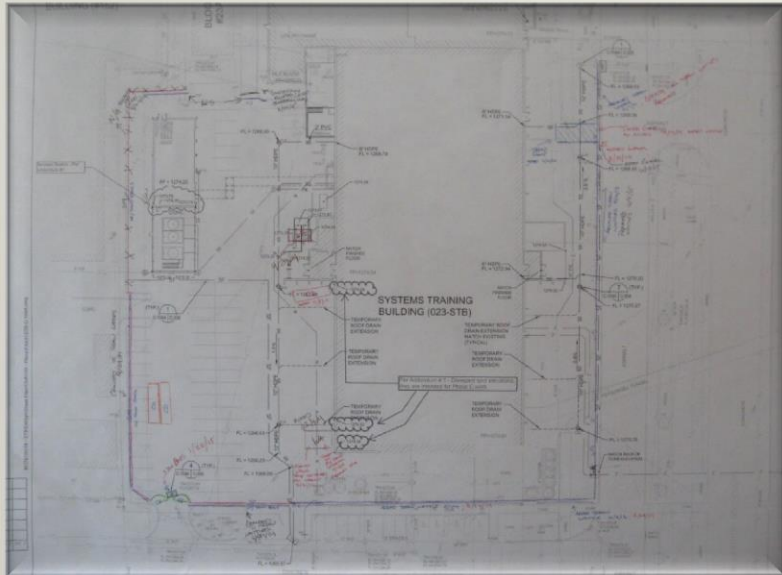
- * 1. Storm Water Management Plan
- * 2. New Construction and Re-development
- * 3. Flood Control Projects and Structural Controls
- * 4. Construction Site Runoff
- * 5. Industrial and High Risk Runoff
- * 6. Household Hazardous Waste/Used Motor Vehicle Fluids
- * 7. Public Outreach
- * 8. Roadway Operation and Maintenance
- * 9. Pesticide, Herbicide and Fertilizer Application
- * 10. Pollution Complaint and Spills Response Program
- * 11. Floatables
- * 12. Wet Weather Analytical
- * 13. Priority Based Monitoring
- * 14. Illicit Discharge Detection and Elimination
- * 15. Supporting Permit Conditions, Monitoring Programs

Construction Auditing Program

- * **Permitting** ~ All construction sites are permitted and inspected for potential pollutant runoff
- * **Permitting requirements**
 - Notice of Intent
 - Storm Water Pollution Prevention Plan
 - Site Plan showing erosion controls
 - Annual permit fee
- * **Sites are audited** by five Environmental Technicians. The intent of these audits is to reduce or eliminate the potential to pollute surface runoff at each site.
- * **2015 - 654 permits issued/8,353 audits**

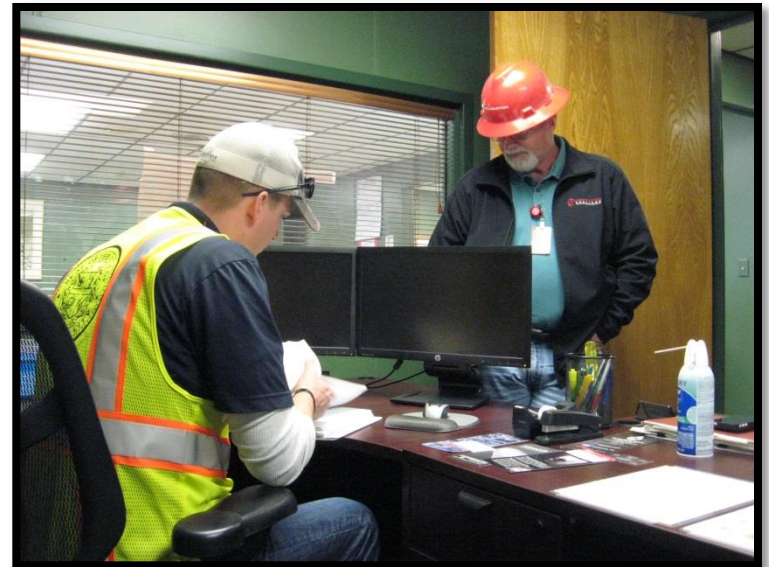


Construction Auditing

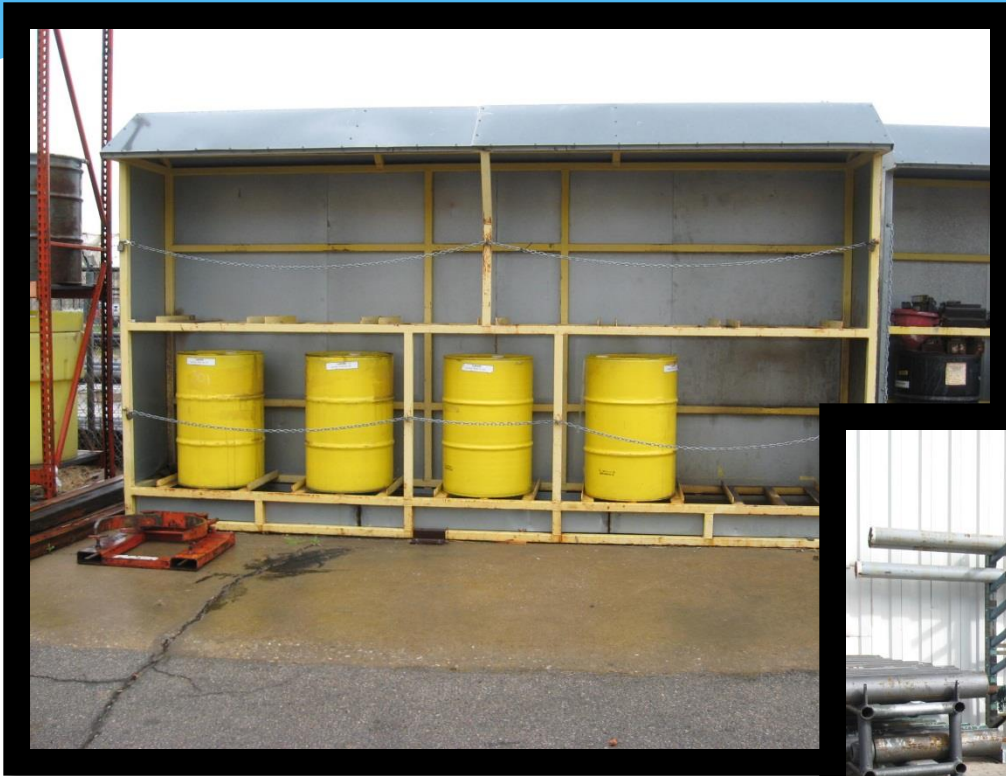


Industrial Auditing Program

- ❑ **Permitting** ~ Specific businesses whose processes or operations are potentially harmful to the environment are required to permit.
- ❑ **Permitting requirements**
 - Notice of Intent
 - Storm Water Pollution Prevention Plan
 - Annual permit fee
- ❑ **Facilities are audited** by four Environmental Technicians.
- ❑ **2015 – 1,239 active permits/1,119 audits**



Best Management Practices



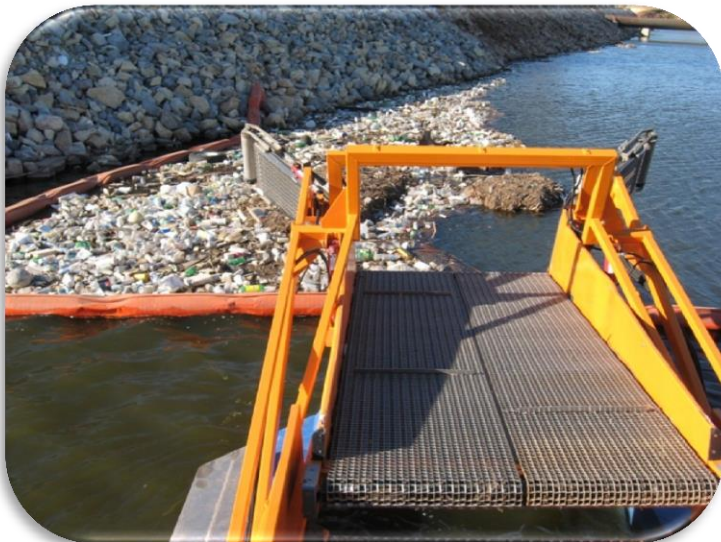
Environmental Water Quality

☐ **Floatable Debris Program ~**

Study-Categorize floatable debris from waterways.

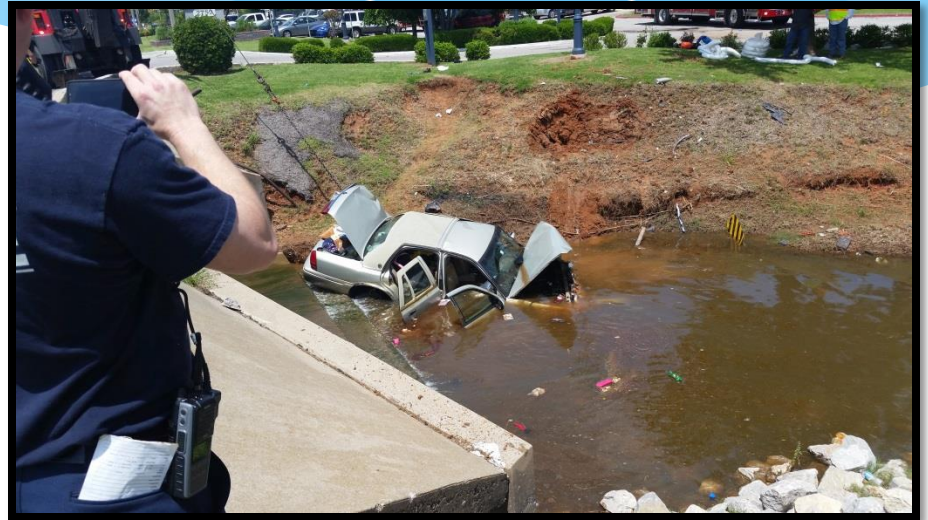
(21 monitoring locations)

327 tons collected in
Oklahoma River in one
year



Illicit Discharge Detection & Elimination Program

- * **Spill Response ~ Provide technical support to the Fire Department**
- * **Administration of the contract for street sweeping**
- * **Storm Drain Camera Operations**



LOW IMPACT DEVELOPMENT (LID)

- * EPA defines LID as “an approach to land development that works with nature to manage stormwater as close to its source as possible.”



Oklahoma City MS4 Permit

- * "Permittee shall promote Low Impact Development and other green design strategies to minimize the impact of urban runoff discharges to receiving streams reducing peak flows and pollutant loads."*



Rain Gardens

- * Rain Gardens are gardens typically comprised of native plants.



- * Rain Gardens are specifically designed to collect, filter, and absorb storm water runoff from impervious surfaces such as roofs, driveways, and parking lots.

Oklahoma City MS4 Permit

- * “Identify local regulatory barriers which prohibit alternative storm water management design practices.”
- * Municipal Code Chapter 16, 48 and 57
- * Rain Water Harvesting



Household Hazardous Waste Collection Facility

- Operating the state's first permanent HHW collection facility since August 23, 2003
- Paint, oil, gas, car batteries, fluorescent light bulbs, cleaning products, pesticides, herbicides, etc.



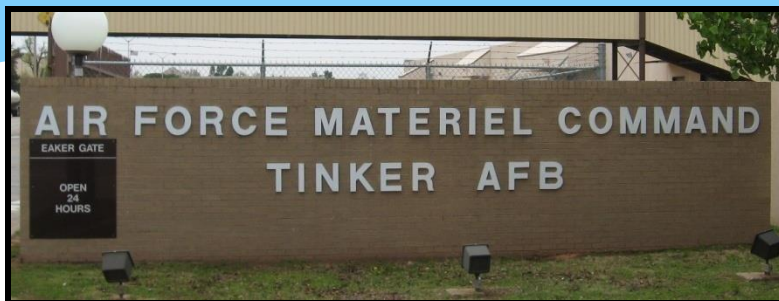
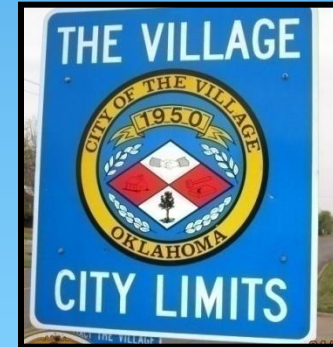
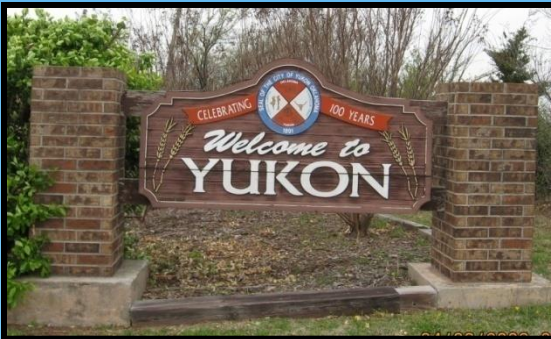
Household Hazardous Waste SWAP Shop



Memorandums of Understanding

The Storm Water Quality Management Division contracts with Phase II cities, to fulfill aspects of their permit obligations with the Oklahoma Department of Environmental Quality.

Bethany, Edmond, El Reno, Moore, Shawnee, Tinker AFB, Village, Warr Acres, and Yukon



City of Oklahoma City Public Outreach Program



News Print Ads

English and Spanish

BRING IT ON.

Oklahoma City's **Household Hazardous Waste Collection Facility** at 1621 S. Portland can take all the paint, bug and weed killers, used motor oil and other chemicals and solvents in your garage, under your sink and around your home. And it doesn't cost you anything.

Check www.okc.gov for a complete list of what we can and can't take or call 682-7038 for more information.

Bring your current water bill stub to prove residency. Residency restrictions apply.

We're open Tuesday-Friday 9:30 a.m. to 6 p.m. and Saturday 8:30 to 11:30 a.m.

**HOUSEHOLD HAZARDOUS WASTE
COLLECTION FACILITY** 1621 S.
Portland

The City of Oklahoma City



TRAIGAMELO.

El establecimiento de **Residuos Domesticos Peligrosos de la ciudad de Oklahoma City** ubicado en la 1621 S. Portland puede recibir, pinturas, mata insectos, mata plantas, aceite de motor usado, solventes y otros quimicos peligrosos que acumulamos en nuestros garages, abajo de la pileta de la cocina y en otros lugares de nuestro hogar.

Vaya a www.okc.gov para obtener una lista completa de lo que aceptamos o llame al 682-7038 para mas informacion.

Estamos abiertos de Martes a Viernes de 9:30 A.M. a 6:00 P.M. y los sabados de 8:30 a 11:30 A.M.

Usted tiene que vivir en Oklahoma City, para obtener esos beneficios.

**ESTABLECIMIENTO de RESIDUOS
DOMESTICOS PELIGROSOS** 1621 S.
PORTLAND

Ciudad de Oklahoma City



Public Outreach Wayne Drop



School Presentations

- * Protecting Our Water Resources

- * Hands-on science activities
- * Pre-Kindergarten – 6th grade
- * Classroom activities, assemblies, and school fairs
- * More than 2,300 elementary school students in 2015



Events and Workshops



- Local Festivals
- Environmental Training Classes
- Speaking Engagements
- Tours



Public Outreach Volunteer Programs

- * Adopt-A-City-Street ~ Volunteers remove trash from street right-of-ways
- * Curbs-to-Creeks ~ Volunteers mark storm drains to prevent improper waste disposal



Central Oklahoma Storm Water Alliance



- * Public Outreach radio announcements
- * Workshops
- * Home and Garden Show
- * Brochures
- * Rain Barrel Promotion
- * Coordination and Planning
- * MS4 Conference 2016



Enforcement



- City of Oklahoma City Ordinances
 - Chapter 16 ~ Drainage & Detention
 - Chapter 48 ~ Grading Erosion & Sediment Control
 - Chapter 57 ~ Permits & Enforcement
- Environmental Technicians are commissioned Environmental Enforcement Officers, capable of shutting down or stopping any activity that is breaking city ordinances or a facilities requirement per their SWPPP.



Thank You



Raymond Melton

City of Oklahoma City

(405) 297-1774



www.okc.gov/swq