

Erosion Control Beyond Silt Fence

Trish Morris

Community Development Project Manager

Ideal Homes

When you hear “erosion control” what is the first product that comes to mind?

SILT FENCE?

Why is silt fence so widely used?

It's Cheap

The average cost per foot installed is \$2.00-\$2.50

It's usually in stock

Silt Fence can be bought through local distributors and hardware stores

It's easy to find someone to install it.

Erosion Control companies can get the product installed quickly

But you get what you pay for...

You may pay less in the beginning for silt fence, but it does not take long for this to happen

Silt Fence installed day one:



Same silt fence 7 days later



Silt fence requires a lot of maintenance and reinstallation, especially in the Oklahoma wind and hot summers.

There are many new options out there!

Compost Options

Berms

Triangular Silt Dike

Haywattle

Flexamat

Durawattle

Compost Options

Compost Socks

Compost Berms

Compost Blankets

Compost Socks

Very Low Maintenance

Aesthetically pleasing

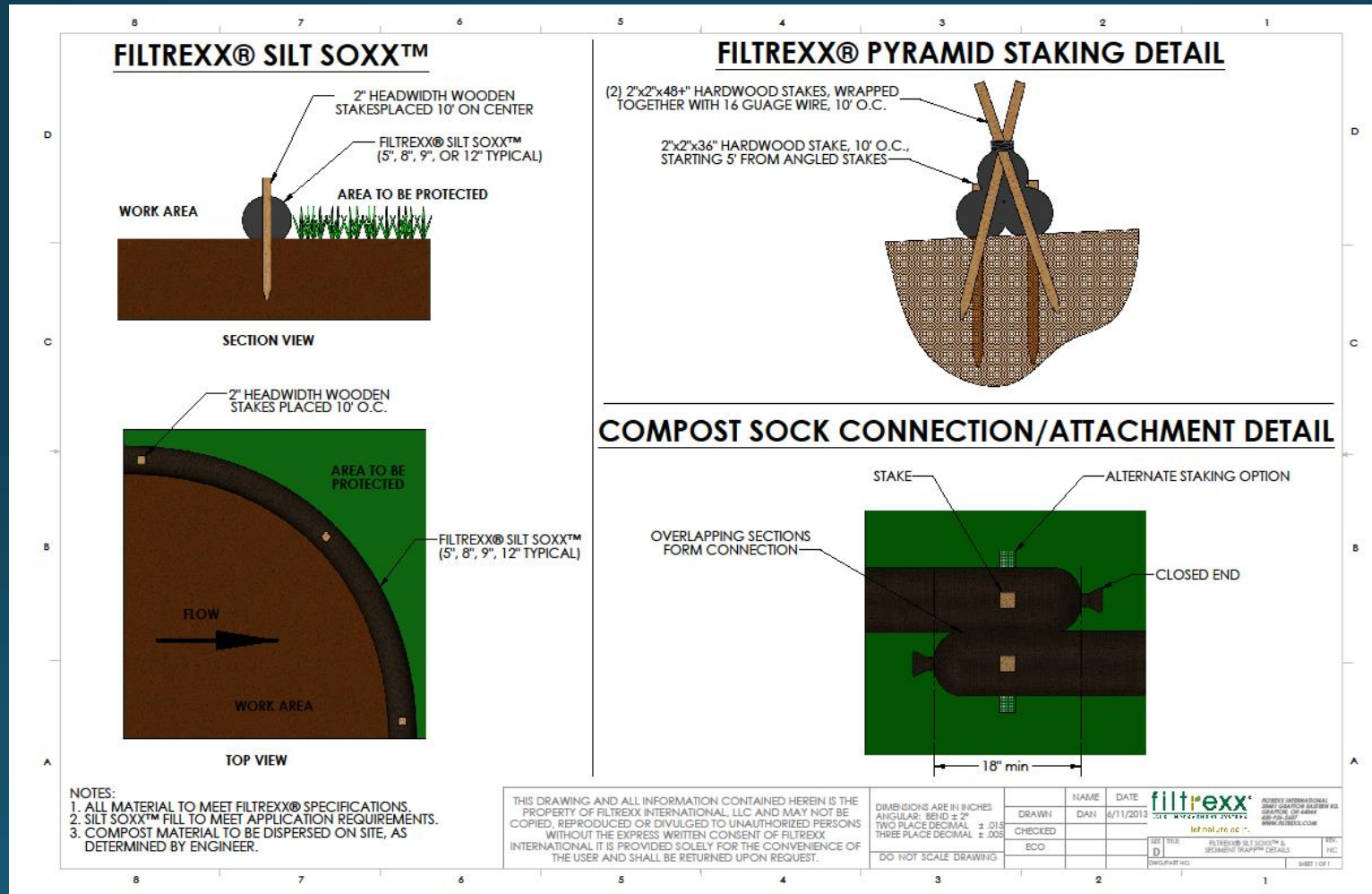
Stackable

Easily adapts to terrain

Can be repurposed to add compost to soil

Compost Socks

Compost Sock Detail

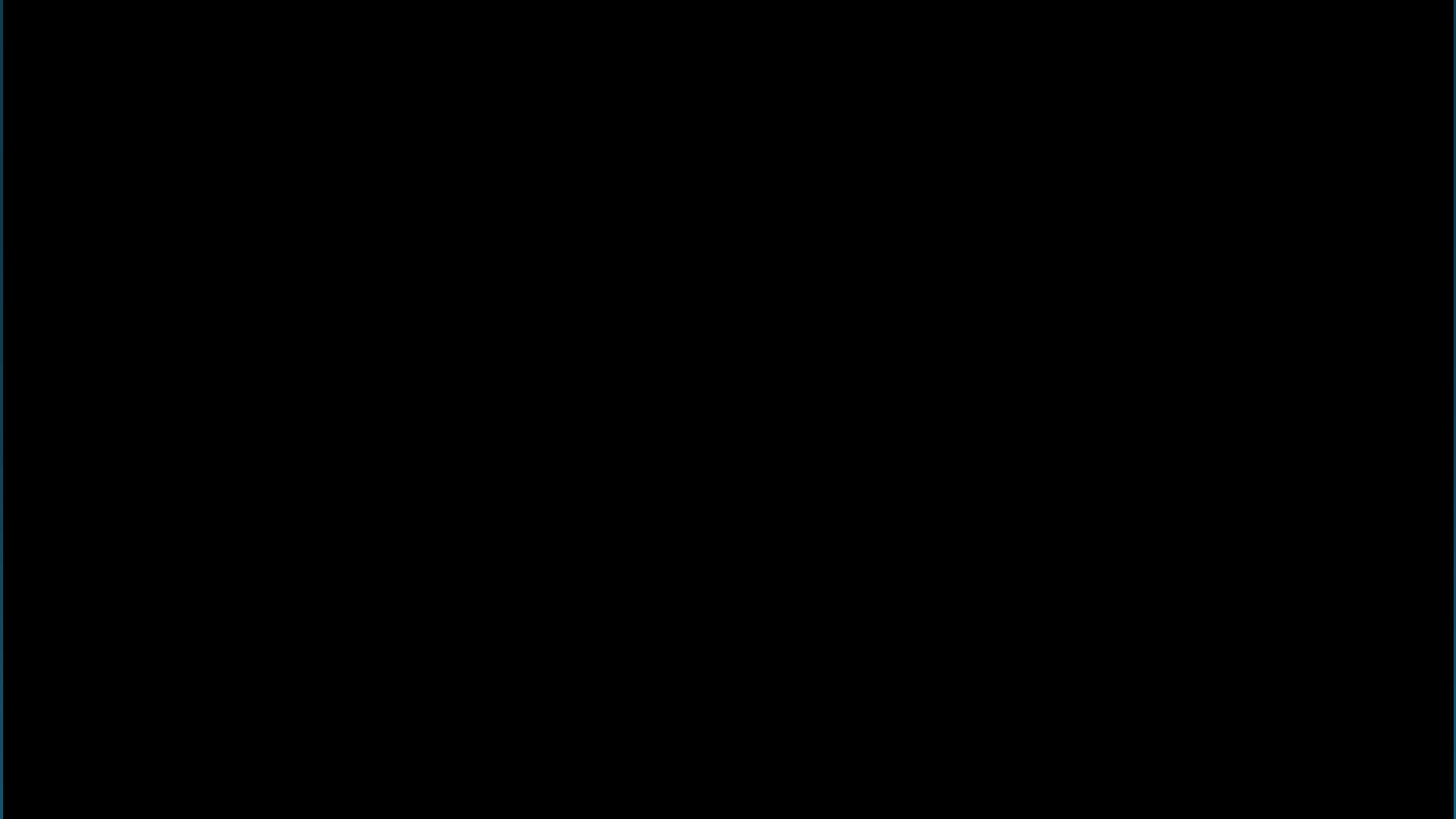


Compost Socks

Quick and Easy Installation

160 Feet of Compost sock was rolled out in less than 3 minutes with an additional 30 minutes of driving stakes

Compost Sock



Compost Socks

Filtrex stacked to protect project



Filtrex in place of silt fence for perimeter control



Compost Blankets



Pond bank before compost was
added

Compost Blankets



Same pond bank with
completed blanket

Compost Blankets



Approximately 2 weeks
after install

Compost Blankets



1 month after install

Compost Blankets

1/2 " to 2" application to reduce run-off and the formation of ruts by increasing the soil's ability to absorb rainfall

Improves poor soil health giving desirable vegetation the nutrients it needs to grow quickly

Compost Blankets

Research by Britt Faucette of Filtrex International has shown that a 2 inch blanket on a 3:1 slope with 4 inches of rain in 2 hours the runoff volume when tested against an untreated slope reduced runoff volume upwards of 90 %

Peak runoff was reduced by 79 %

Total sediment by 96%

And the total nitrogen and phosphorus were reduced by 99%

Berms

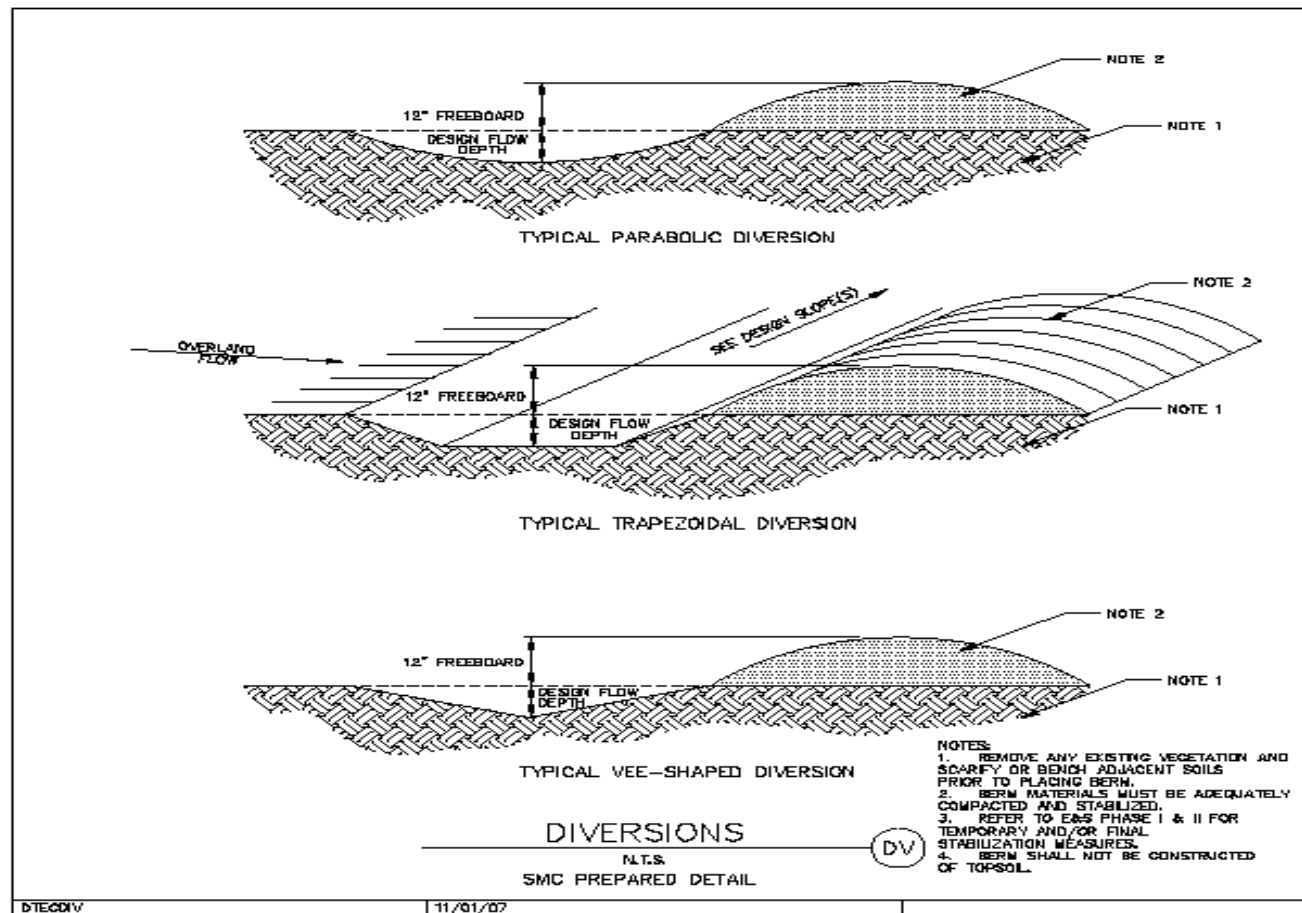
Easily adapts to terrain

Aesthetically pleasing

Can be low maintenance

Diversion Berms

Various Berm Details



Berms



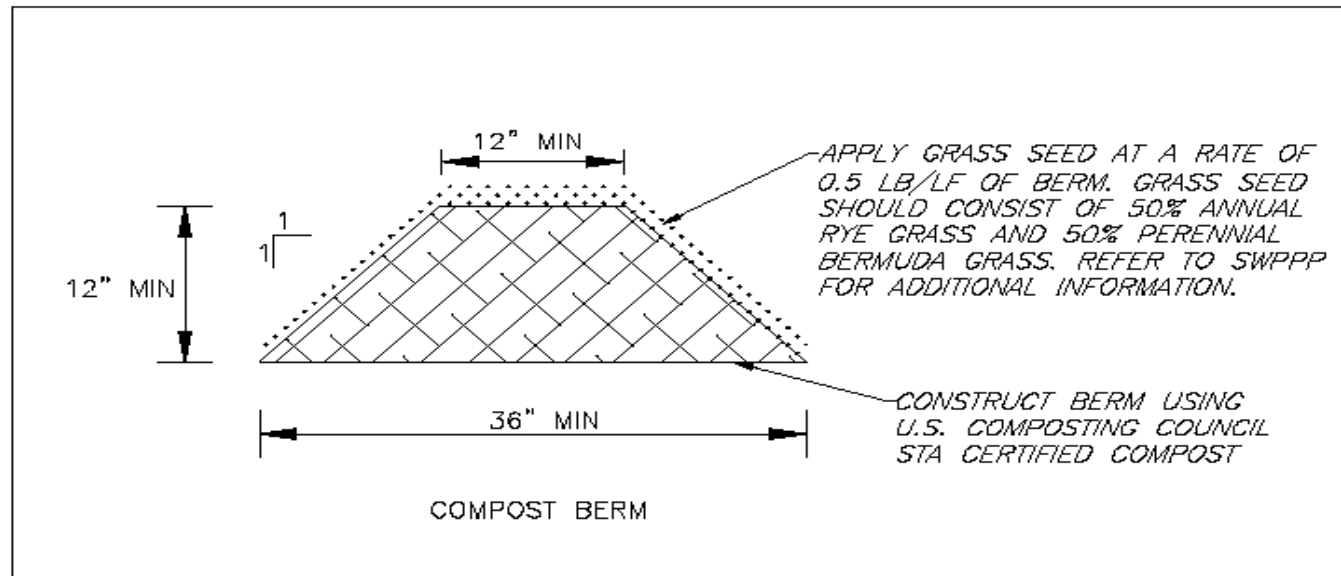
Front of berm



Back of berm

Compost Berms

Compost Berm Detail



Compost Berms



Application with pneumatic blower



Application using a side discharge spreader with a berm attachment.

Compost Berms

Complete berm installed on site



Compost Berms

Grows vegetation quickly

On slopes can be placed 1 ½ time to 2 times the distance apart as fiber roles (but not further than 30 feet apart)

Meant only to disrupt flow, not stop it entirely.

Triangular Silt Dike

Fast and Easy installation

Conforms to Rough Terrain

Light Weight

Re-usable

Can be installed on concrete or asphalt if needed

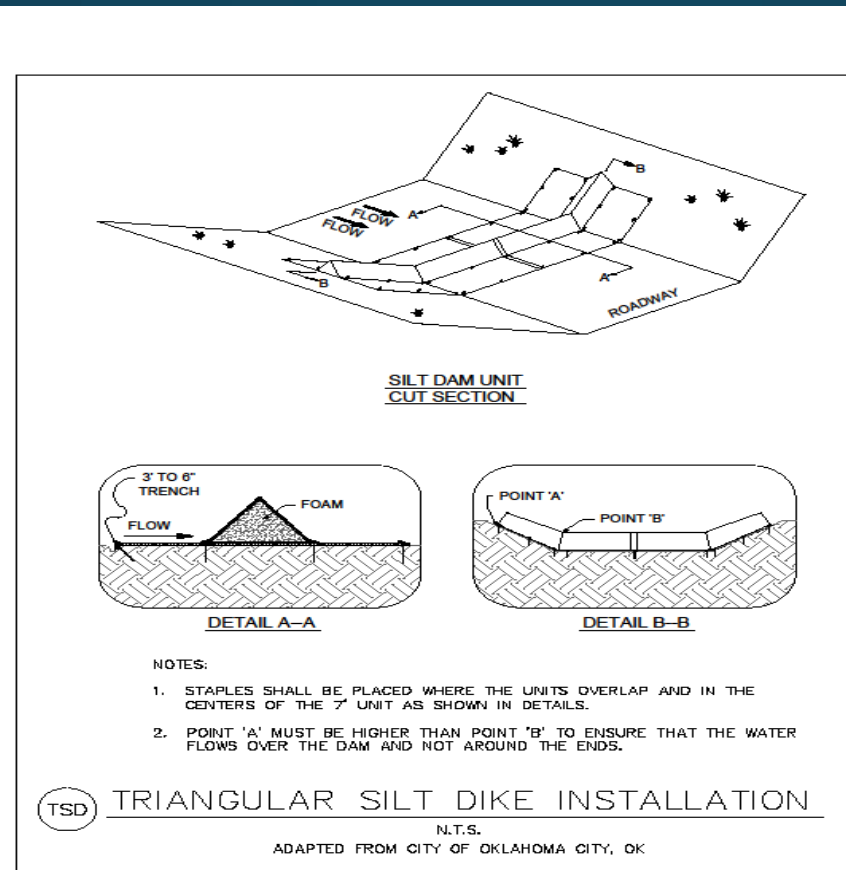
Can be driven over

Triangular Silt Dike

Allows for water to be slowed down so that particulates can be dropped out, allowing cleaner water to flow over the product and water to be percolated into the soil

Triangular Silt Dike

Triangular Silt Dike Detail



Triangular Silt Dike

Front of lot protection



Triangular Silt Dike

As a check dam



Triangular Silt Dike



Used as berms



Triangular Silt Dike

Great way to create check dams in streets



Straw Wattle

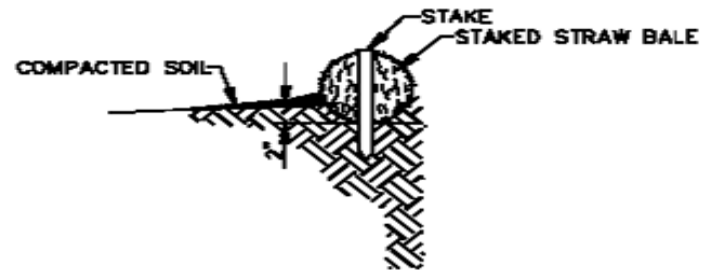
Relatively easy to install, requires a small trench to sit in and wooden stakes to hold it in place

Conforms to rough terrain

Light Weight

Straw Wattle

Straw Wattle Detail



ELEVATION

*STRAW WATTLE
INSTALLATION DETAIL*

N.T.S.

GENERAL NOTES:

1. STRAW WATTLE SHALL BE PLACED ALONG THE CONTOUR. THE ENDS SHALL OVERLAP BY 3 FEET MINIMUM.
2. THE STRAW WATTLE SHALL BE ENTRENCHED AND BACKFILLED. A TRENCH SHALL BE EXCAVATED THE WIDTH OF THE STRAW WATTLE TO A DEPTH OF 2 INCHES. AFTER THE STRAW WATTLE IS STAKED, THE EXCAVATED SOIL SHALL BE BACKFILLED AND COMPACTED AGAINST THE FILTER BARRIER.
3. EACH STRAW WATTLE SHALL BE SECURELY ANCHORED AND HELD IN PLACE BY STAKES OR REBARS DRIVEN THROUGH THE STRAW WATTLE EVERY 3 FEET.

Straw Wattle



Flexamat

Permanent alternative to rip-rap

6.5 "x6.5"x2.25" concrete blocks with 1.5" spacing between the blocks laid on top of Curlex II backing.

Allows for vegetation to grow up in the between the blocks, easy to maintain versus traditional rip rap.

Flexamat



Flexamat



Durawattle

Lightweight and easy to install

Reusable

Ships compressed, can get up to 1800 feet on each pallet

Conforms to grade changes

Durawattle



Make it safe for developers and contractors to test new products, failures lead to great successes!

If you see a better way speak up! It is so easy to get stuck in the “if its not broke, don’t fix it” mentality.

Keep track of your resources, many vendors are willing to come on site and walk you through where you went wrong!

Questions?

You can contact me for questions on any of the products I spoke about today:

Trish Morris

tmorris@ideal-homes.com

405-535-4867