



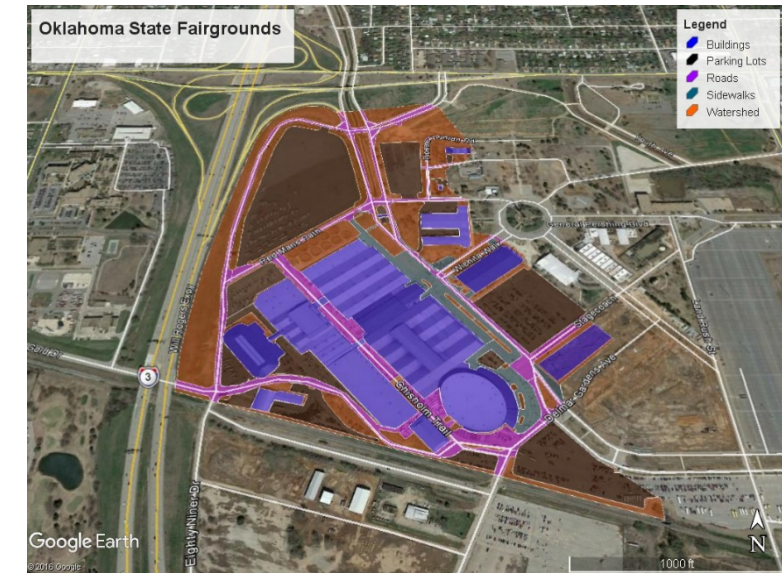
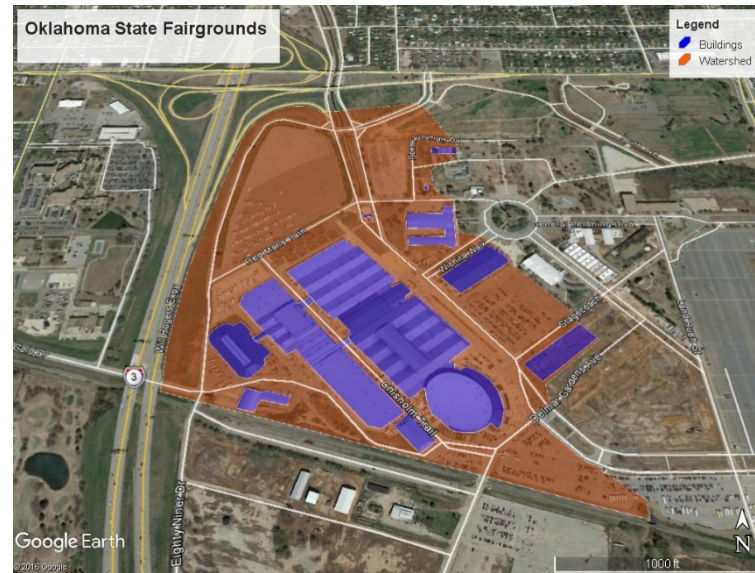
LID Planning and Optimization Introduction



Learning Objectives

1. Develop a baseline knowledge of the capabilities and limitations of the EPA Stormwater Calculator.
2. Optimize design of LID type based on runoff reduction and cost in an urban watershed.

Design and Planning



Given an urban watershed, how do we choose what type of LID to implement?

- Water quantity reduction
- Cost
- Aesthetics
- Feasibility

Optimizing the Design and Planning Process



- Hundreds of different options
- Water quantity reduction and cost are quantifiable
- Water quantity → estimate using a runoff model
- Cost → estimate based on area of LID type
- Use iterations to maximize runoff reduction and minimize cost