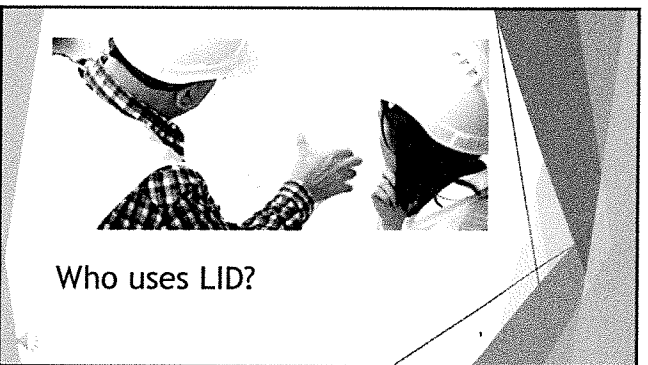



LID Components in Building Design

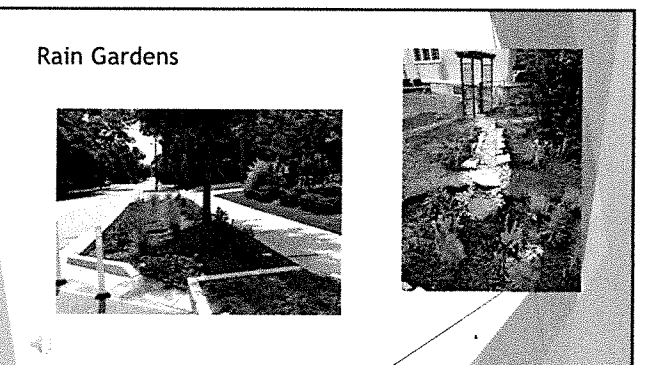
CITY OF WESLACO
PLANNING & CODE ENFORCEMENT - ENGINEERING DEPARTMENT

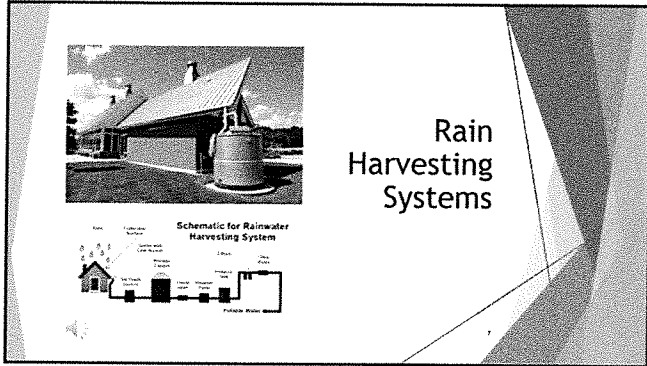
- ## Why do we use LID?
- ▶ Reduce runoff volume and intensity of stormwater flow
 - ▶ Drainage Issues
 - ▶ Flooding Mitigation
 - ▶ Preserve and restore natural habitat
 - ▶ Improve water quality
 - ▶ Manage stormwater efficiently and effectively

- ## Introduction
- ▶ What does LID stand for?
 - ▶ Why do we use it?
 - ▶ Who uses it?
 - ▶ What are some examples?
 - ▶ When does LID become important?



- ## Low Impact Development (LID)
- 
- ▶ LID used for
 - ▶ stormwater management
 - ▶ Flooding Mitigation
 - ▶ To address runoff and NPS pollution
 - ▶ NPS pollution conveyed by MS4s
 - ▶ Reduce volume and intensity of runoff.

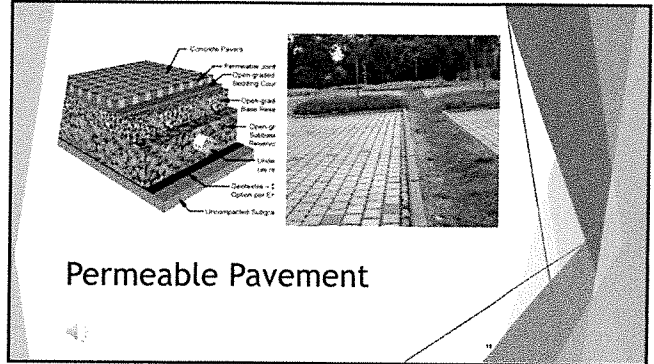




Rain Harvesting Systems

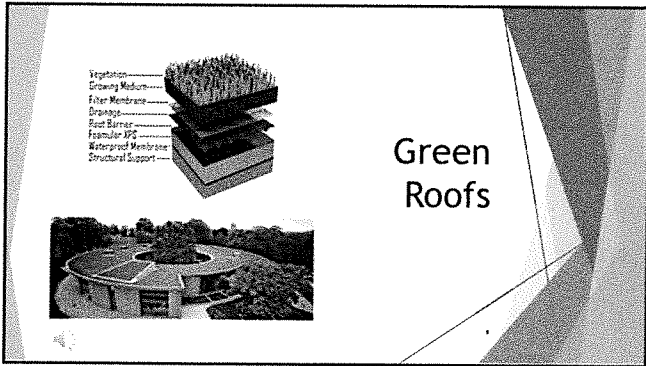
Schematic for Rainwater Harvesting System

The slide features a photograph of a house with a rain barrel and a detailed schematic diagram of a rainwater harvesting system. The schematic shows the flow of water from the roof, through a downspout, into a storage tank, and then through a filter and pump to a distribution point.



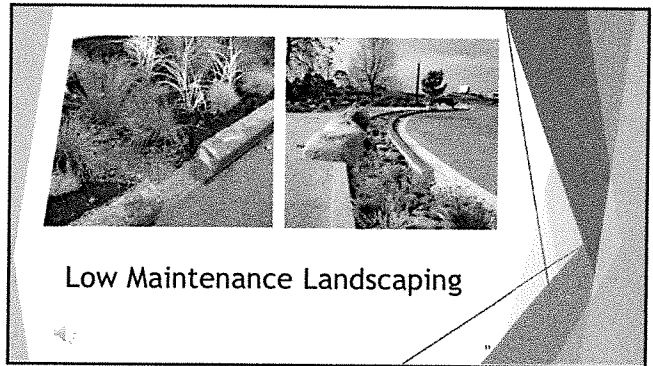
Permeable Pavement

The slide includes a cross-sectional diagram of permeable pavement layers and a photograph of a paved walkway. The diagram labels the following layers from top to bottom: Concrete Pavers, Permeable Joint, Open-graded Bedding Layer, Open-graded Base Layer, Open-graded Subbase Layer, and a 1.5-inch Sand Layer. Below the sand layer is a 2-inch Open-graded Friction Course and a 4-inch Uncompacted Subgrade.



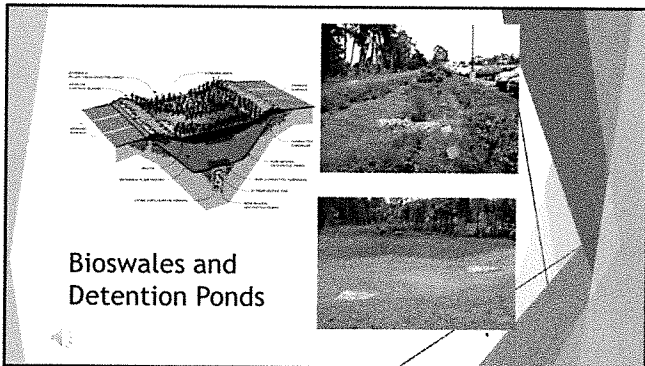
Green Roofs

The slide shows a cross-section of a green roof system and a photograph of a circular green roof structure. The cross-section labels the layers: Vegetation, Growing Medium, Filter Membrane, Drainage, Root Barrier, Perimeter Wall, Waterproof Membrane, and Structural Support.



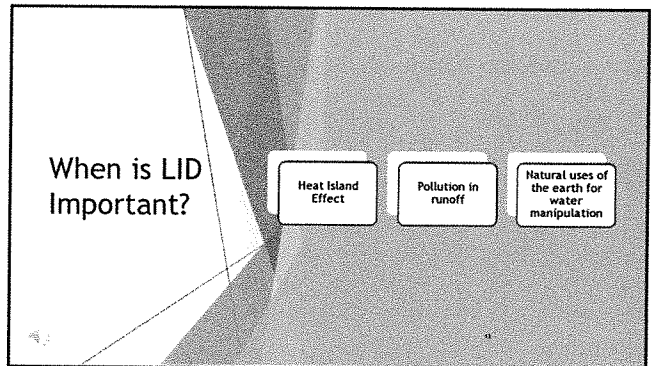
Low Maintenance Landscaping

The slide contains two photographs: one showing a landscaped area with various plants and a concrete curb, and another showing a curved concrete path or drainage feature in a landscaped area.



Bioswales and Detention Ponds

The slide features a cross-sectional diagram of a bioswale, a photograph of a bioswale in a residential area, and a photograph of a detention pond. The diagram labels the bioswale components: Vegetation, Growing Medium, Filter Membrane, Drainage, Root Barrier, Perimeter Wall, Waterproof Membrane, and Structural Support.



When is LID Important?

- Heat Island Effect
- Pollution in runoff
- Natural uses of the earth for water manipulation

Resources

- ▶ Google Images
- ▶ Trance. (2007, November). Top Ten Frequently Asked Questions on LEED and HVAC. Engineers newsletter, Vol. 36-4
- ▶ AHBL. (2012, July). Integrating LID into Local Codes: A Guidebook for Local Governments.



LOWER RIO GRANDE VALLEY - TEXAS POLLUTANT DISCHARGE ELIMINATION SYSTEM STORMWATER TASK FORCE

The University of Texas Rio Grande Valley • Civil Engineering Department • 1201 West University Drive
Edinburg, Texas • 78539 • (956) 929-7189 • <http://rgvstormwater.org>

LRGV TPDES TASK FORCE

Governing Board

Officers/Directors

Jose Hinojosa, REM
Santa Cruz Irrigation
Dist. #15
Chair

Jose Figueroa
City of Mercedes
Vice-Chair

Mardoqueo Hinojosa, P.E.
City of Weslaco
Secretary

Members

Robert Escobar
City of La Feria

Carol Vasquez
City of Brownsville

Roy Jimenez
City of Donna

Paolina Vega, P.E.
Cameron County

Albert Barreda
CC Drainage District #1

Ex-Oficio

Dr. Andrew Ernest, P.E.
UTRGV

Dr. Jungseok Ho, P.E.
UTRGV

Augusto S. Gonzalez MS
UTRGV

AGENDA OUTREACH COMMITTEE CONFERENCE PLANNING

May 2, 2018
City Hall, Alamo, TX
10 am

AGENDA

1. Introductions
2. Review 2018 agenda
 - a. Technical Sessions
 - b. Keynotes
 - c. Theme
 - d. High School tracks
 - e. Poster track
 - f. Alumni Track
 - g. EPA and TCEQ staff
 - h. Legislators
3. Other key items
 - a. Sponsors/Exhibitors
 - b. Roundtables
 - c. Dinners
 - d. Speaker Logistics
4. Planning
 - a. Venue
 - b. Printing
 - c. Posters for Agenda/Sponsors
 - d. Website
 - e. Shirts
 - f. Booths
 - g. Menu
5. Fishing tourney Update
6. General Discussion
 - a. Travel arrangements
 - b. Staff travel arrangements and logistics
 - c. Speaker shuttling
7. Pre-Conference
 - a. TFMA
 - b. Grant Symposium
8. Other
9. Adjourn

Members

Xavier Cervantes, AICP
City of San Juan

Bernard Rodriguez
City of San Benito

Juan De La Garza
City of Mission

Robert Valenzuela
City of Edinburg

Veronica Flores
City of Primera

Leo Olivares
City of Palmview

Raul Garcia
City of Los Fresnos

Rudy Garza, CPM
City of Alton

Ernesto Solis
City of Alamo

Isidro Venecia
City of La Joya

Lupe Garcia
City of Palmhurst

Eduardo Gonzales
Willacy County

Task Force Liaison

Javier Guerrero, E.I.T., MS
UTRGV