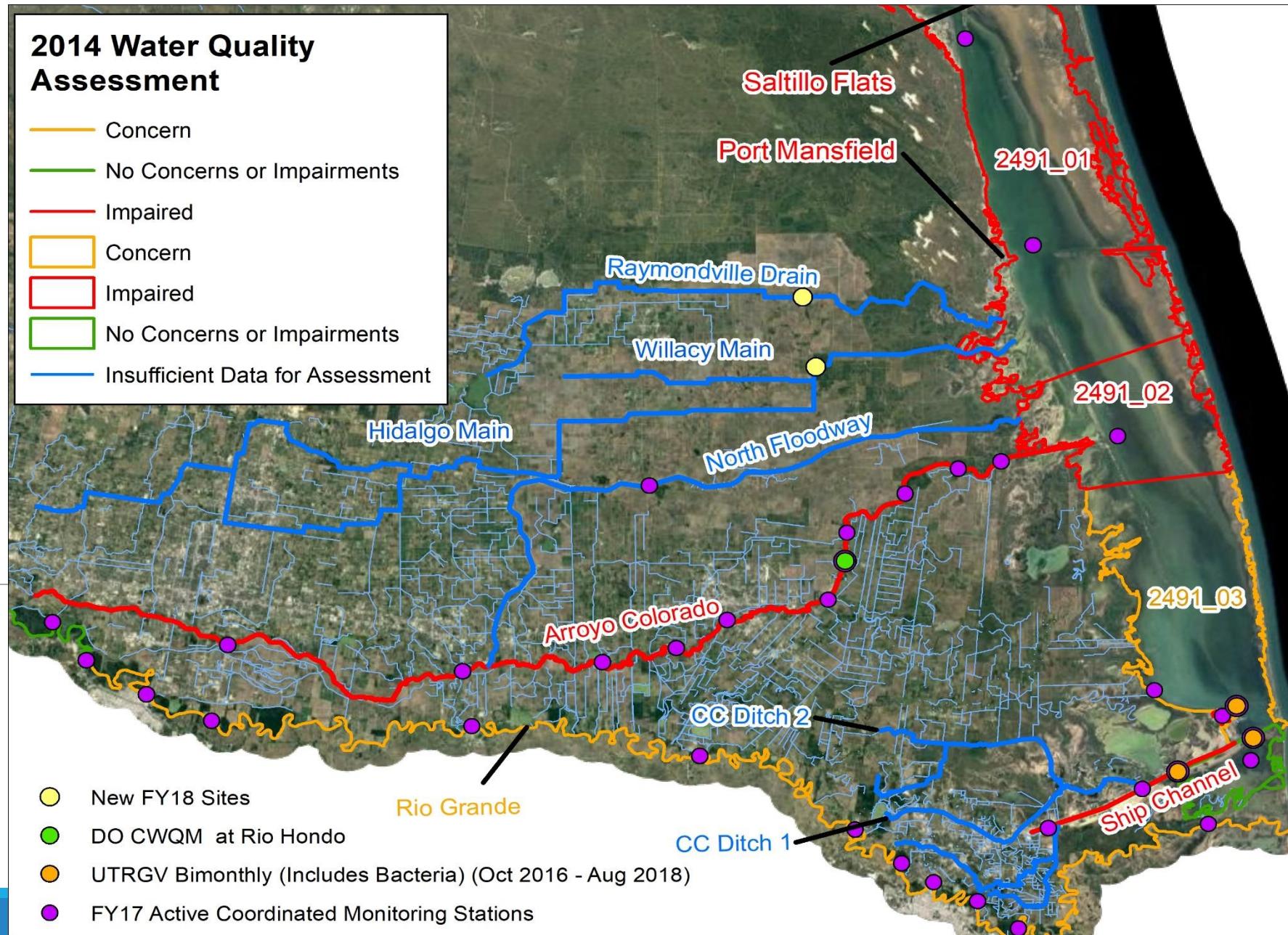

Hidalgo/Willacy County Floodway Watershed Protection Plan Project Steering Committee Meeting

TCEQ CWA § 319(h)

Grant Scope of Work Overview

2014 Water Quality Assessment

- Concern
- No Concerns or Impairments
- Impaired
- Concern
- Impaired
- No Concerns or Impairments
- Insufficient Data for Assessment



- New FY18 Sites
- DO CWQM at Rio Hondo
- UTRGV Bimonthly (Includes Bacteria) (Oct 2016 - Aug 2018)
- FY17 Active Coordinated Monitoring Stations

Background

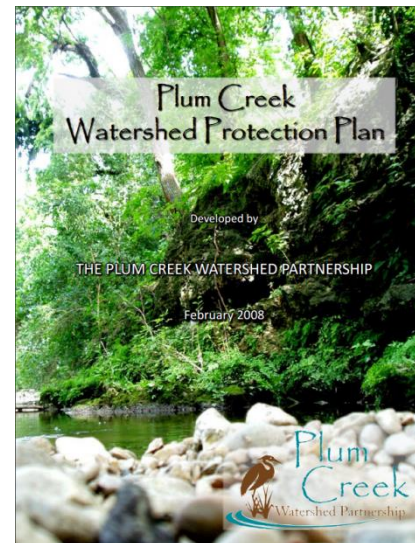
- The Raymondville Drain and the Hidalgo Main, the IBWC pilot channel (IBWC North Floodway) flow into the Lower Laguna Madre which is **impaired** for low **DO** and **bacteria**.
- The Hidalgo Main Drain carries urban stormwater runoff from central and northern Hidalgo County, and agricultural runoff from northeast Hidalgo County and Willacy County.
- There is a **lack of water quality data** collection within the target region and limited data has been collected

Project Description

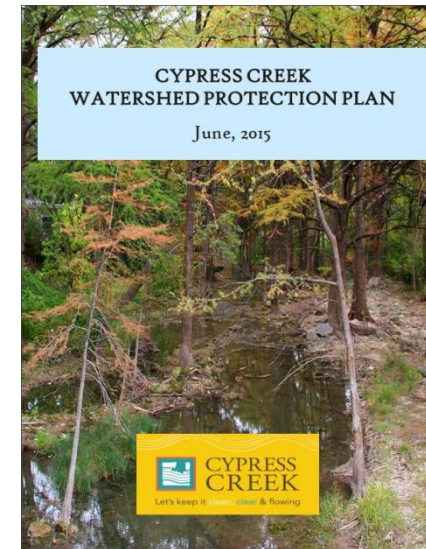
- The major sub-watersheds must be **characterized** to identify potential **causes** and **sources** of impairments.
- This project will identify **existing data** and identify **data gaps** for characterization as well as identify a path forward by selecting an analytical method for **estimating pollutant loads**

Watershed Protection Plans

Meets the Nine Elements listed in EPA's
*Handbook for Developing Watershed
Plans*



Restoration



Protection

EPA's 9-Elements

A- Identify causes and sources of pollution

B - Estimate pollutant loading into the watershed and the expected load reductions

C - Describe management measures that will achieve load reductions and targeted critical areas

D - Estimate amounts of technical and financial assistance and the relevant authorities needed to implement the plan

E - Develop an information/education component

F - Develop a project schedule

G - Describe the interim, measurable milestones

H - Identify indicators to measure progress

I - Develop a monitoring component

Project Goals

Goal	Measure of Success
Partial development of Element A and initiation of Element E of EPA's Nine Elements for WBPs found in the Handbook for Developing Watershed Plans to Restore and Protect our Waters.	Completion of Watershed Characterization – Data Evaluation Report and approval from TCEQ PM.
Engage stakeholders to provide input for the development of a Strategic Plan moving forward based on information presented from the Watershed Characterization.	Formation of Stakeholders workgroups. List of next steps for watershed-based planning in the Partnership Coordination Report.

Task 1: Project Administration

QPRs

Coordination meeting with EPA (upon request)

Annual Report article and pictures (upon request)

Contract Budget updates

Annual Budget updates

Task 2: Quality Assurance

QAPP Planning Meeting notes

Draft and Final QAPP

QAPP Annual Reviews and Revisions

Draft and Final QAPP Amendments

Task 3: Watershed Characterization – Data Evaluation and Analysis

Summary of existing data and information

Cyberinfrastructure establishment and database development

Interim Existing Data and Information Analysis Report

Draft and Final Watershed Characterization and Next Steps Report

Task 4: Partnership Coordination

Public Participation Plan

Documentation of key stakeholder meetings, including agendas, presentations, and sign in sheets, minimum of three per quarter

Draft and Final Partnership Coordination Report

Task 5: Final Report

Draft Final Report

Address TCEQ/EPA comments

Final Report

1- Hidalgo/Willacy Floodway Watershed Protection Plan - Includes region above the Arroyo Colorado to the south watershed boundary of the Raymondville Drain, and from the Starr County border to the Laguna Madre

1. Chair David Fuentes, Hidalgo County Commissioner
2. Vice Chair Eduardo Gonzalez, Willacy Commissioner
3. Marci Oveido, LRGVDC
4. Javier Guerrero, RATES/RGV (Task Force)
5. Melisa Gonzales, City of Alamo
6. Kim Jones, P.E., Ph.D., TAMUK
7. Andrew Ernest, P.E., UTRGV
8. Joe Hinojosa, Santa Cruz Irrigation District #15
9. TBD
10. TBD
11. TBD

2- **USIBWC Pilot Channel/Floodway** Watershed Protection Plan - From the Rio Grande River region, including regions not included in the Arroyo watershed, along the Rio Grande River continuing north and then east to the Laguna Madre.

3- **Raymondville Drain** Watershed Protection Plan - Includes region above the Hidalgo/Willacy Floodway northern watershed boundary to the northern LRGV County limits, and from the Starr County border to the Laguna Madre

Questions?

**Texas Commission on Environmental Quality (TCEQ) Clean Water Act (CWA) Section 319(h)
Nonpoint Source (NPS) Grant Program through UTRGV,**

PI : Andy Ernest, Ph.D., P.E., BCEE, D. WRE

Co-PI: Javier Guerrero, M.S., E.I.T.

Watershed Coordinator: Ahmed Mahmoud, Ph.D.

UTRGV Technical and admin support:

1. Andrew Ernest, P.E., Ph.D., UTRGV
2. Abdoul Oubeidillah, Ph.D., UTRGV
3. Jungseok Ho, P.E., Ph.D., UTRGV
4. TBD (HCDD#1)
5. TBD (WCDD#1)
6. TBD (CCDD#1)
7. TBD

Administrative Team

1. Deanna Levrier, UTRGV
2. Augusto Sanchez Gonzalez, UTRGV