

Education, Outreach, and Involvement

Section 3.2.3

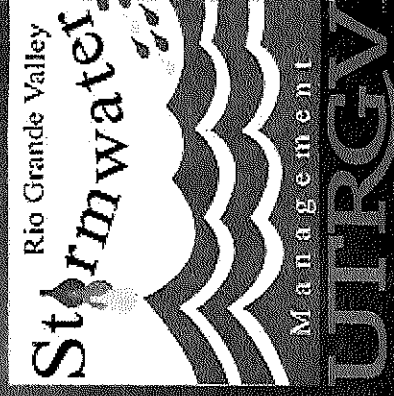
Classroom Presentations

CITY OF PALMHURST STORMWATER MANAGEMENT



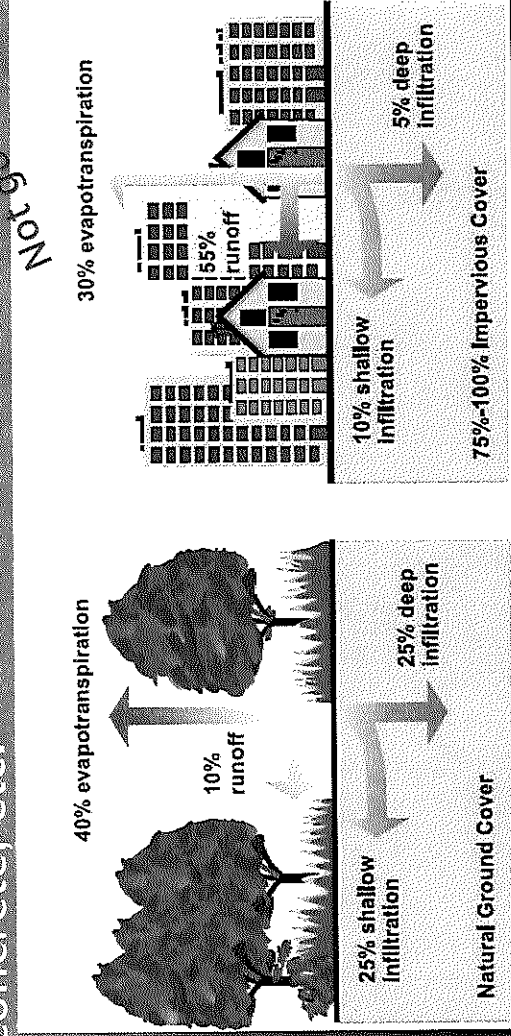
RIO GRANDE VALLEY

st^ormwater
MANAGEMENT



WHAT IS STORMWATER?

- Stormwater is precipitation (Rainwater) that originates during a storm event
- Rain water that does not soak into the soil and grass is called Stormwater surface runoff. This Stormwater runs off impervious covers such as roofs, streets, parking lots, concrete, etc.



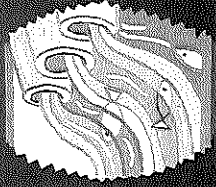
DOES STORMWATER CAUSE FLOODING PROBLEMS?

- Yes, with excess runoff caused by the decrease in absorption can cause flooding. In addition, garbage picked up by these waters can also clog the drainage system, causing a slowdown in the drainage ability of the City's system. A combination of these two events has the potential to cause flooding within the City.

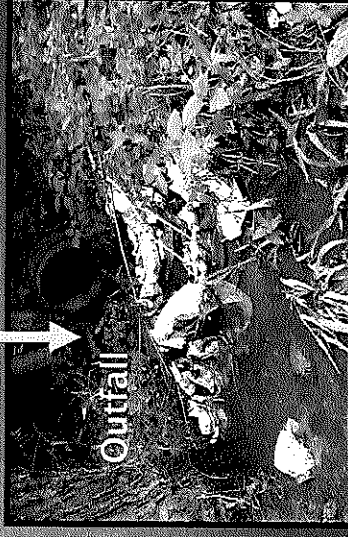
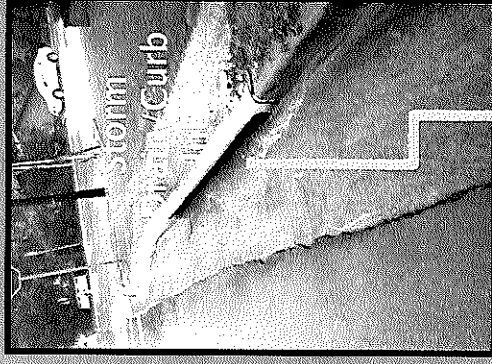
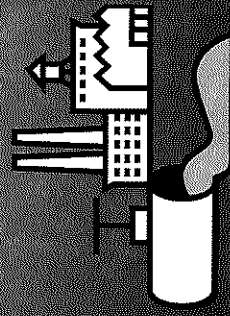
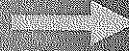
WHERE DOES IT GO?

- Stormwater runoff flows toward storm drains and into a system of underground piping
- Stormwater runoff flow directly into our creeks and rivers, untreated and unfiltered.

Stormwater

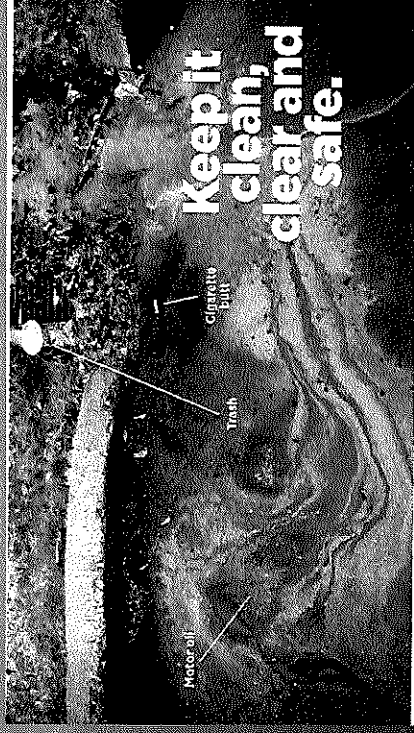
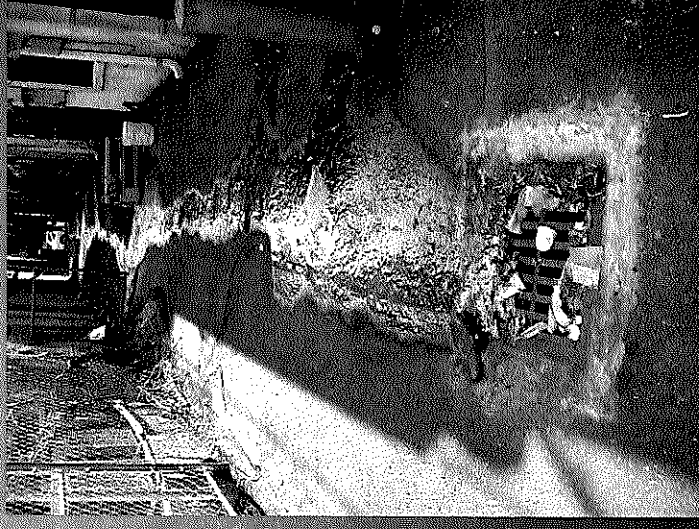


Wastewater



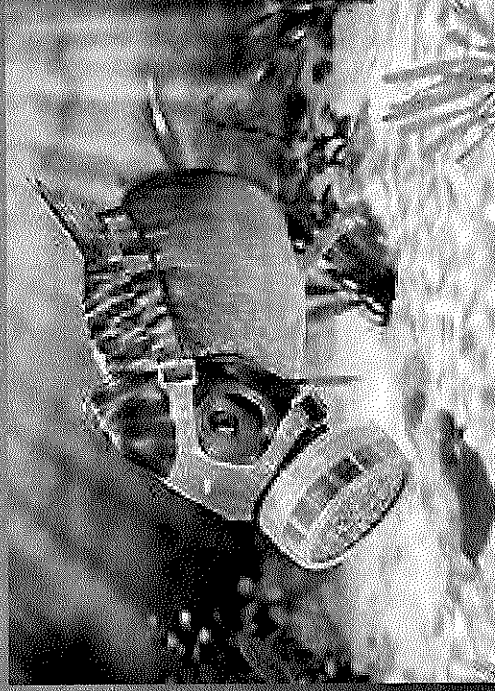
STORMWATER RUNOFF: THE DIRTY TRUTH

- Stormwater runoff contributes to problems in water quantity (Flooding) and water quality (Pollution)
- Unfiltered Stormwater can have contaminants and bacteria such as:
 - Oil and gasoline
 - Fertilizers
 - Pesticides
 - Soil
 - Soap
 - Grass clippings
 - Pet waste



WHAT WATER CONTAMINATION CAN DO

- Due to contaminants in the water, the oxygen amount is low, and the fish cannot breathe. These can be sediment particles, litter, fertilizer, pesticides, herbicides, or any other physical or chemical contaminate that should not be in Stormwater runoff.



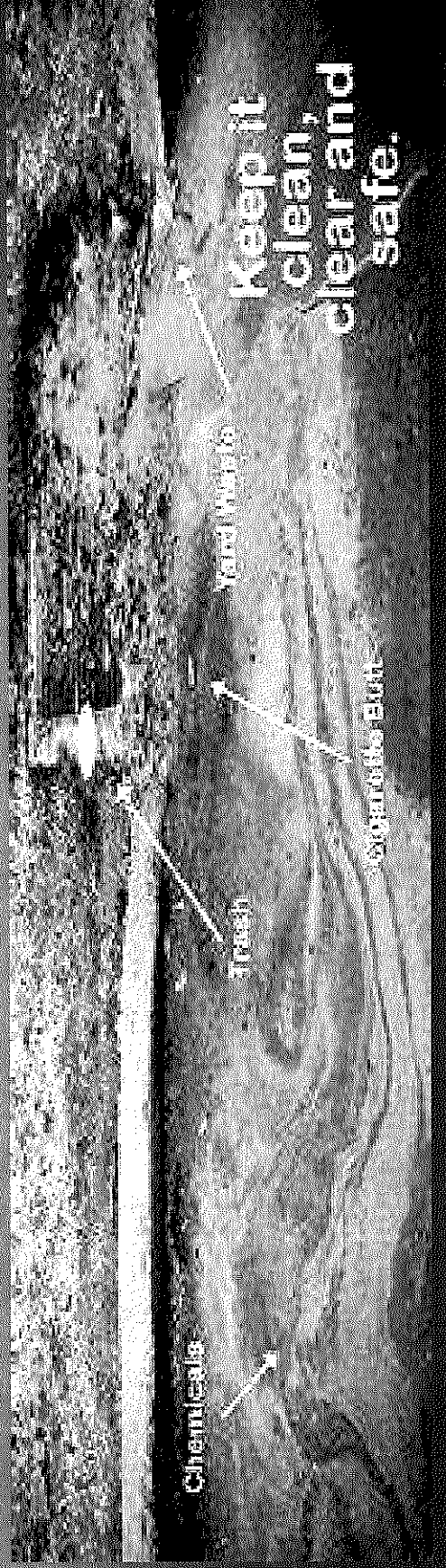
WHAT'S WRONG WITH THIS PICTURE?

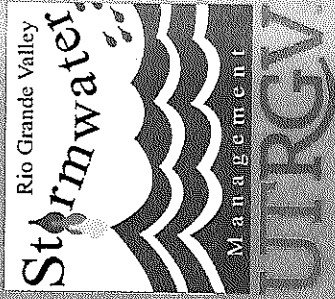


- Leaves/ yard waste that is not disposed of properly(Bagged up and/or composted) can end up in storm drains and result in plugging of the storm drain system and pollution of the river.

WHAT TO DO IF YOU SEE ILLEGAL DUMPING INTO THE STORM DRAINS, DITCHES, OR CANALS

- This type of activity is illegal and will be handled through ticketing, fines, and in some cases jail time. If possible call the City of Palmdale Police Department (956) 519-3800 or contact the Stormwater Specialist at (956) 388-8211 or (956)388-8999.





Thank
you!

