

# **HURRICANE PREPAREDENESS: REDUCING FLOOD RISK WITH SIMPLE HOUSEKEEPING PRACTICES**

Brownsville Public Works



# WHEN IS HURRICANE SEASON?

What's your plan if or when a hurricane strikes?



- The Atlantic Hurricane season is from June 1, 2018 through November 30, 2018.
- The peak months for storms is normally the months of August and September according to past events.

# HURRICANE CATEGORIES

Category	Sustained winds minimum	Sustained winds maximum	Types of damage due to winds
Category 1	74	95	Very dangerous winds will produce some damage:
Category 2	96	110	Extremely dangerous winds will cause extensive damage:
Category 3	111	129	Devastating damage will occur:
Category 4	130	136	Catastrophic damage will occur:
Category 5	137 or higher		Catastrophic damage will occur:



# HOW TO PREPARE YOUR HOME FOR HURRICANE SEASON !

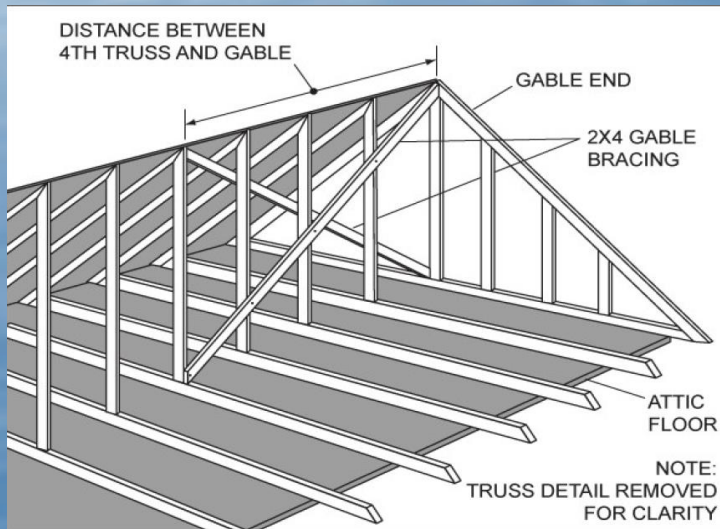
- Trim or remove damaged trees and limbs before the season.
- Secure all loose rain gutters and downspouts
- Secure and reinforce your roof, windows and garage doors.
- Put your patio and pool deck furniture away.





# HOW TO PREPARE YOUR HOME FOR HURRICANE SEASON !

- Trim or remove damaged trees and limbs before the season.
- Secure all loose rain gutters and downspouts
- Secure and reinforce your roof, windows and garage doors.
- Put your patio and pool deck furniture away.



# HURRICANES AND STORMWATER

When it comes to hurricanes, wind speeds do not tell the whole story. Hurricanes produce storm surges, tornadoes, and often the most deadly and costly of all -- inland flooding.





# HURRICANES AND STORMWATER

When it rains, part of the water is absorbed by the ground.

The rest becomes run-off which is moved away from the area by the stormwater drainage (Also known as MS4) into a local water body to avoid flooding.





# HURRICANES AND STORMWATER

An obstructed stormwater inlet, drainage ditch or waterway can significantly reduce the ability of the MS4 to move away all the excess water.

***...And cause flooding.***





# HOW TO PREPARE YOUR HOME FOR HURRICANE SEASON !

- ***Throughout the year***, avoid throwing trash on the street, to ditches or waterways.
- ***Throughout the year***, sweep your curb and gutters regularly.
- Check that storm drains close to your home are clear and not blocked by trash or other objects.
- Remove any trash, leaves, dirt/construction material piles or any item that can end up in a storm sewer, drain ditch or waterway and not allow stormwater to flow away.



# THE STORM IS OVER... WHAT IS NEXT?

Once the hurricane passes, strong winds and stormwater carries a lot of debris and trash to our properties which if it is not properly disposed, can eventually end up in the storm sewer. This trash and debris needs to be lifted and separated in order to get picked-up.

Besides the normal trash pick-up provided by Republic Services, the City of Brownsville has a scheduled service to pick-up from the curb side the following brush and bulky items:





# The storm is over... what is next?

## Acceptable Brush Items

- Grass (must be bagged)
- Leaves (must be bagged)
- Shrubs
- Tree Limbs (must not exceed 8 feet in length)

## Acceptable Bulky Items

- Chair
- Furniture
- Mattress
- Sofa
- Stove
- Table
- Washer / Dryer
- Water Heater



Please do not place items within 6 feet of any obstacles such as:

- Building overhangs
- Overhead wires of any kind
- Parked cars
- Telephone service boxes
- Gas or water meters

# ADVANCE PREPARATION WILL IMPROVE YOUR HOME PROTECTION IF A HURRICANE STRIKES





# THANK YOU

