

A stylized, colorful illustration of a landscape. In the foreground, there are rolling green hills with a dark brown path winding through them. On the left, a green tree and a purple flower stand on a small hill. A red bird is flying in the sky above the tree. The background features more rolling hills in shades of blue and white, suggesting a distant horizon or sky.

*Good House keeping
practices to reduce
water pollution.*

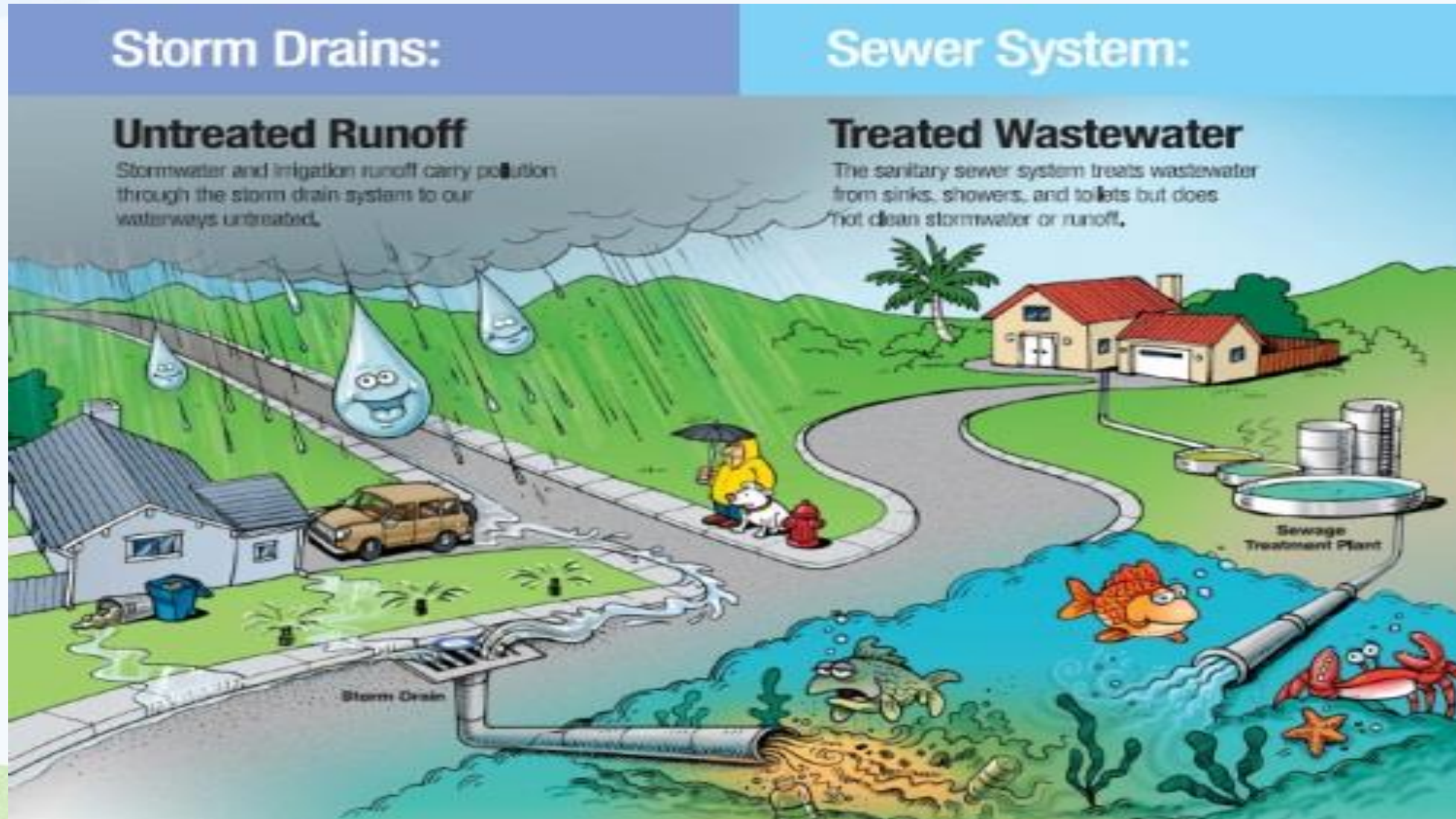
City of Brownsville Public Works

Did you know?

- Rain water run-off is one of the major contributors to water pollution.



How do the pollutants get to our drinking water sources?



Rain water takes trash and pollutants to our drains which end in our water sources.



Storm drain



Resacas and ditches

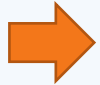


Laguna Madre

Rain water takes trash and pollutants to our drains which end in our water sources.



Storm drain



Resacas



Laguna Madre

How can I help?





Talk with your parents:

First, explain them the housekeeping activities that can help reduce runoff pollution.

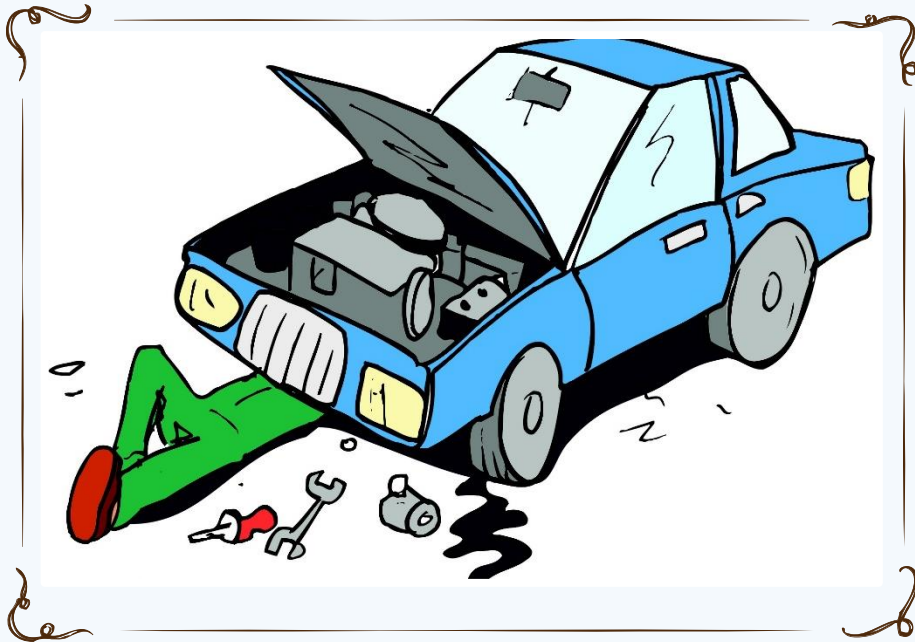
Second, see how you can help your Mom and Dad with these activities.



Sweeping.

Sweep your curb and gutter regularly. This will stop dirt and debris from building up.

Take care when maintaining or washing vehicles on the street or driveway.



Oil and other contaminating fluids like anti-freeze can make their way to the storm drains.



Soap and contaminated dirt can flow with the wash water all the way to the storm drain.



Never dispose
of cleaning
products in the
storm drain!

For disposal, look for household
hazardous waste drop-off
locations in your area. Try
non-toxic, non-hazardous
cleaning products or
alternative cleaning supplies.

Control erosion and landscaped areas.



Use native shrubs, plants and natural groundcovers to beautify your home, control areas where use has damaged plants, and consider alternative materials, such as river rock or mulch, in those areas of heavy use.



Lawn clippings should always be mulched back into the lawn. Landscape trash is in the top 5 of storm drain clogging materials.



Paint brush wash.

Do not clean paint brushes in an area where paint can flow into the street or storm drain. For unused paint, try donating it to a home reuse center. Dry any empty paint cans before disposal in the trash.



Pet waste
contributes to
water pollution.

In order to prevent pet waste
from entering waterways
scoop the poop, bag it, and
place it in the trash

By everyone doing our part, we can have
a cleaner drinking water.



Thank you!!!

