



**CITY OF HARLINGEN
HUC 10 FLOOD PROTECTION
PLANNING STUDY**

A REGIONAL COLLABORATION

Minimizing Duplication through Collaboration



“Non-cooperative approaches, by contrast, almost always involve duplication of effort, since someone working independently must spend time and skills on problems that already have been encountered and overcome by someone else.”

Alfie Kohn

THE STUDY

- 295+ Square Miles of Study Area
- 950+ Structures
- 580+ Channel Sections & Arroyo Bathy
- Comprehensive H&H Models (1D/2D)
- Real Time Warning Development

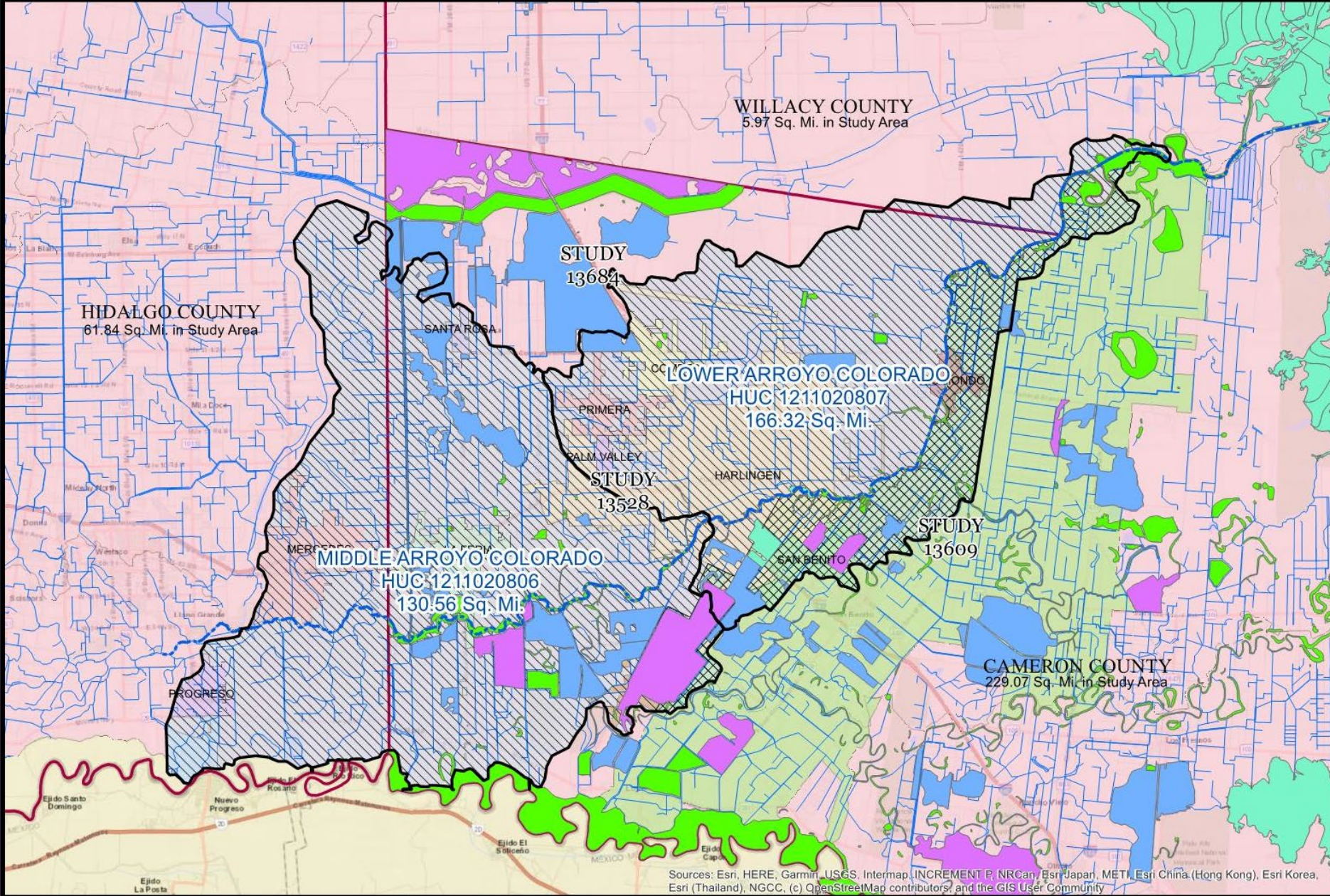
Collaborative Efforts

- Monthly Coordination Meetings – Mark your Calendars!!!
3rd Thursday @ 2:00 PM OAN
- Compilation of existing baseline information
(Regional & Local Studies and Reports)
- Data Formatting for Regional Data Sets
- Data Sharing (hint – it is caring!)
- Minimization of Duplication





The project watershed was estimated using the best available data from the USGS Watershed Boundary Dataset (v2.3). Revisions to the project watershed may be necessary with additional data, development of more refined modeling tools, refinement of design criteria, or other factors.



Legend

- Arroyo Colorado
 - NHD Flowlines
 - County Lines
 - 13528-Harlingen Study
 - 13609-CCDD3 Study
 - 13684-LRGVDC Study
 - Overlap with 13609
 - Overlap with 13684
- ### Flood Zones
- A
 - AE
 - AH
 - AO
 - VE

Project Area and Component Map

Sources: Esri, HERE, Garmin, USGS, Intermap, INCREMENT P, NRCan, Esri Japan, METI, Esri China (Hong Kong), Esri Korea, Esri (Thailand), NGCC, (c) OpenStreetMap contributors, and the GIS User Community



CITY OF HARLINGEN
ENGINEERING DEPARTMENT
 502 E. TYLER AVE.
 HARLINGEN, TEXAS 78550
 (956) 216-5280

CITY OF HARLINGEN HUC 10 FLOOD PROTECTION PLANNING STUDY

PROJ. NO:	FIF_13528
DATE:	OCT-14-2020
DRAWN BY:	ARV
CHEKD BY:	ARV
ISSUED FOR:	DESIGN

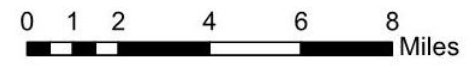


EXHIBIT NUMBER:
G-105
 SHEET 1 OF 1