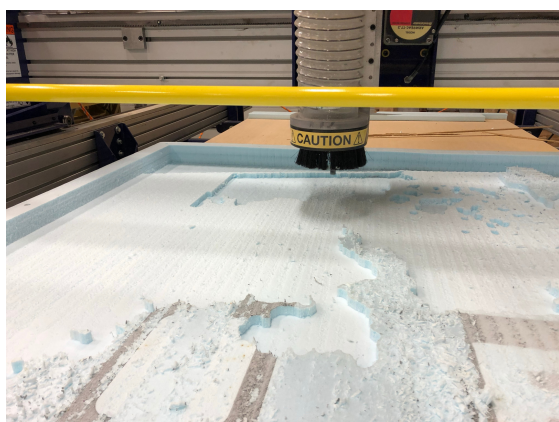


# LOWER LAGUNA MADRE BROWNSVILLE SHIP CHANNEL WATERSHED 3D MODEL

As a part of the LLMBSC Partnership, UTRGV is developing a 3D terrain model of the Lower Laguna Madre Brownsville Ship Channel area. This model will be used to inform stakeholders about the physical behavior of their watershed. Extensive education and outreach activities will come along too. The WPP will use unique and innovative approaches to educate the public about water in the LRGV. Workshops and programs for children (K-12) will also be offered by this project addressing topics ranging from water resources education to land stewardship.



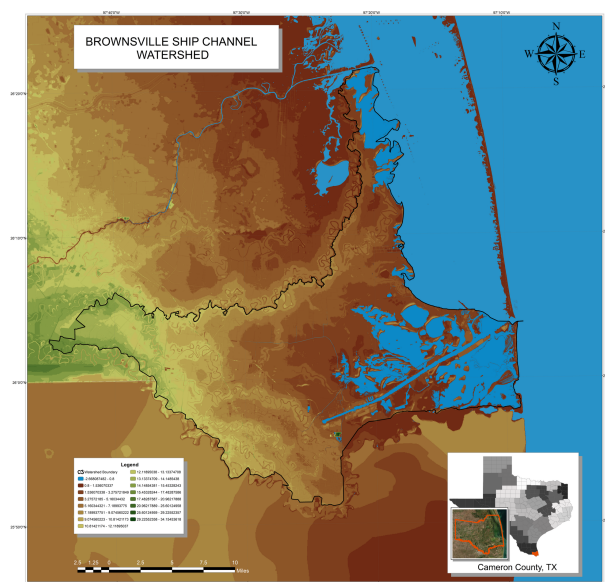
ACTUAL STATE OF THE MODEL

## WHERE ARE WE NOW?

The 3D Watershed Model is right now in its beginning phase. Professor Timothy Gonchoroff is the artist responsible of bringing into life the project.

## HOW WILL IT BE DONE?

The model will be carved out of styrofoam with a CNC machine. Once finished, it will be required to use polyester resin with fiberglass to cover the surface, which will make it waterproof so it can be shown at the different K-12 activities.



MAP USED AS REFERENCE

THIS PROJECT HAS BEEN FUNDED BY THE UNITED STATES ENVIRONMENTAL PROTECTION AGENCY UNDER ASSISTANCE AGREEMENT (99614624) TO THE TEXAS COMMISSION ON ENVIRONMENTAL QUALITY