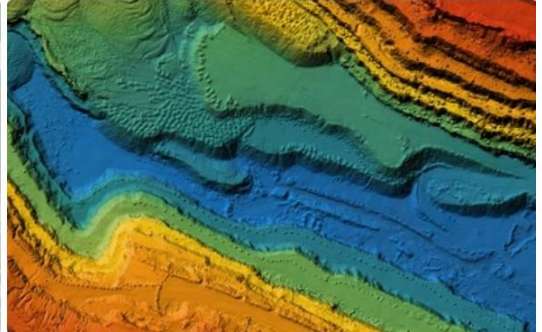


LRGV TPDES STORMWATER TASK FORCE PARTNERSHIP

STORMWATER
CONFERENCE 2023

25th ANNUAL STORMWATER MANAGEMENT & PLANNING CONFERENCE
South Padre Island Convention Center, South Padre Island, TX
Register here: <https://lrgv-tdpes-stormwater-task-force.square.site/courses>



GIS Course I – Introduction Course

ArcGIS Pro allows you to view, edit, analyze, and share your GIS data quickly and efficiently using a modern, ribbon-based interface and streamlined workflows.

It is also designed to be web-connected, so you can access information stored online as easily as data that you have stored locally and then share it online or locally with equal ease.

In this course, you will learn the basics of working with ArcGIS Pro, including some workflows and best practices.

GIS Course II – Intermediate Course

As you work with your projects, you might need to update old information or add new geometries to your data.

ArcGIS Pro allows you to add new data or update features quickly and efficiently. You will also realize that new data will need to be created and we will cover the different GIS formats in detail in this course.

ArcGIS Pro also lets you run Analysis and Geo-processing tools that can help you be more efficient at work. We will also see the integration of your data into ArcGIS Online but at an intro level.

Come and join us!

May 21-23, 2023

Training will be provided by:
Sergio Castro, ENP
AIM GIS Solutions

With Over seventeen years of experience of working with GIS Technology ranging from 9-1-1 data to local government needs!

NOTE: MAJOR COURSE HARDWARE REQUIREMENT

This course requires the student to bring their own laptop (must be a 64-bit operating system) and since installation of the software is part of this training, you will need administrative rights to install software if your computer is administered by your organization.

GIS Course I – Introduction Course (\$150 for Task Force Members; \$195 General, Late Fee after May 6, 2023, \$195 for Task Force Members; \$215 General)

Course Objective:

ArcGIS Pro allows you to view, edit, analyze, and share your GIS data quickly and efficiently using a modern, ribbon-based interface and streamlined workflows. It is also designed to be web-connected, so you can access information stored online as easily as data that you have stored locally and then share it online or locally with equal ease. In this course, you will learn the basics of working with ArcGIS Pro, including some workflows and best practices.

Training Outline:

- 1.) SOFTWARE INSTALLATION AND COURSE OVERVIEW
- 2.) GETTING STARTED WITH ARCGIS PRO
- 3.) WORKING WITH GIS DATA
- 4.) COORDINATE SYSTEMS OVERVIEW
- 5.) SYMBOLOGY
- 6.) ADDING TEXT TO A MAP
- 7.) MAP LAYOUTS

This course is intended:

- Individuals that are new to ArcGIS Pro or migrating from ArcMap
- Individuals that are looking to get familiarize with ArcGIS Pro application features
- Individuals that are needing to make simple maps from existing data.
- Individuals that are looking to learn the new terminology

GIS Course II – Intermediate Course (\$195 for Task Force Members; \$395 General, Late Fee after May 6, 2023, \$195 for Task Force Members; \$415 General)

Course Objective:

As you work with your projects, you might need to update old information or add new geometries to your data. ArcGIS Pro allows you to add new data or update features quickly and efficiently. You will also realize that new data will need to be created and we will cover the different GIS formats in detail in this course. ArcGIS Pro also lets you run Analysis and Geoprocessing tools that can help you be more efficient at work. We will also see the integration of your data into ArcGIS Online but at an intro level.

DAY ONE Training Outline:

- 1.) SOFTWARE INSTALLATION AND COURSE OVERVIEW
- 2.) GIS DATA FORMATS AND STRUCTURE
- 3.) ARCGIS PRO MAP AND DATA SETTINGS
- 4.) EDITING IN ARCGIS PRO
- 5.) OPEN DISCUSSION

DAY ONE Training Outline:

- 1.) GEOPROCESSING TOOLS
- 2.) ANALYSIS TOOLS
- 3.) GEOREFERENCING
- 4.) COORDINATED GEOMETRY
- 5.) ARCGIS ONLINE
- 6.) OPEN DISCUSSION

This course is intended:

- Individuals that need to learn how common processes
- Individuals that need to edit existing or new data.
- Individuals that need to digitize data from survey and/or plat information.
- Individuals that need to extract data from a feature class.
- Individuals that need to share their data to ArcGIS Online

DISCOUNT- GIS Course I and II – (\$295 for Task Force Members; \$495 General, Late Fee after May 6, 2023, \$315 for Task Force Members; \$515 General)