

Flood Planning for the State of Texas

Turning the Tide: Coastal & Stormwater Leadership

Kevin Wessels

Manager, Regional Flood Planning

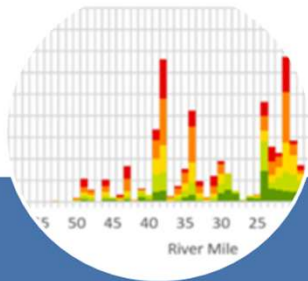
Texas Water Development Board

June 18, 2026

2024 State Flood Plan



Key Planning Objectives



**Collect
Data**



**Identify
Risks**



**Recommend
Projects**

How do we plan?

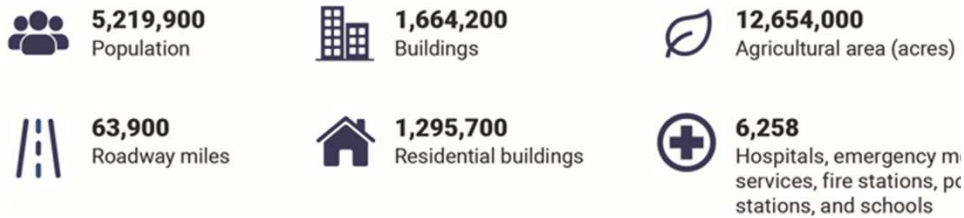
- **15 watershed-based regions**, each with a regional flood plan
- **Bottom-up approach:** Groups governed by local, volunteer members.
- **Open process:** Ample opportunities for public input at RFBG meetings, comment on plans, written comments.
- **Future funding:** Projects included in regional flood plan will be eligible for future Flood Infrastructure Fund financing.



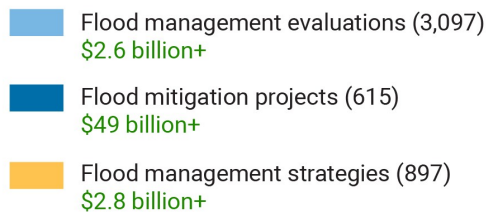
An overview of 2024 State Flood Plan findings

Existing flood risk

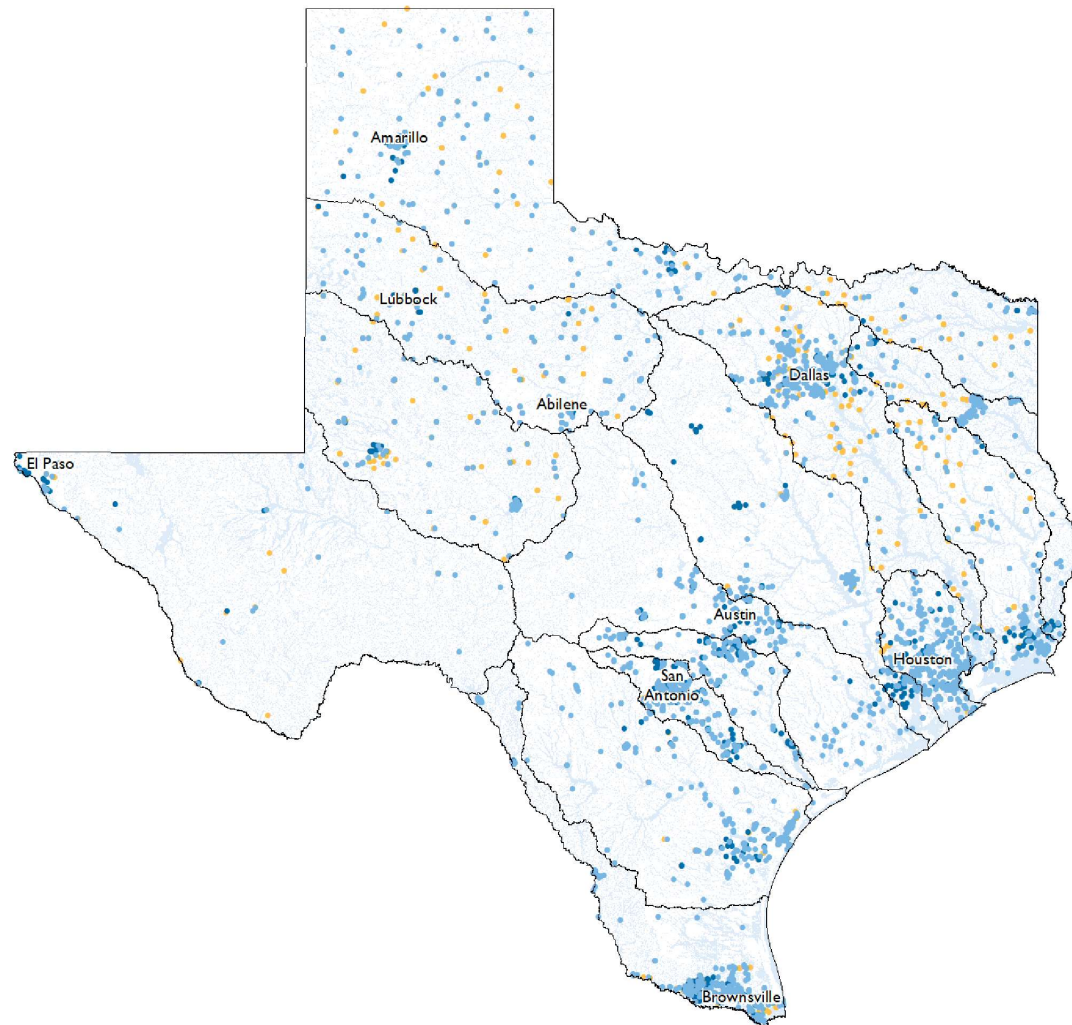
(in 1 percent [100-year] and 0.2 percent [500-year] annual chance flood hazard areas)



Recommended Studies, Projects and Strategies



Total \$54.5 billion+

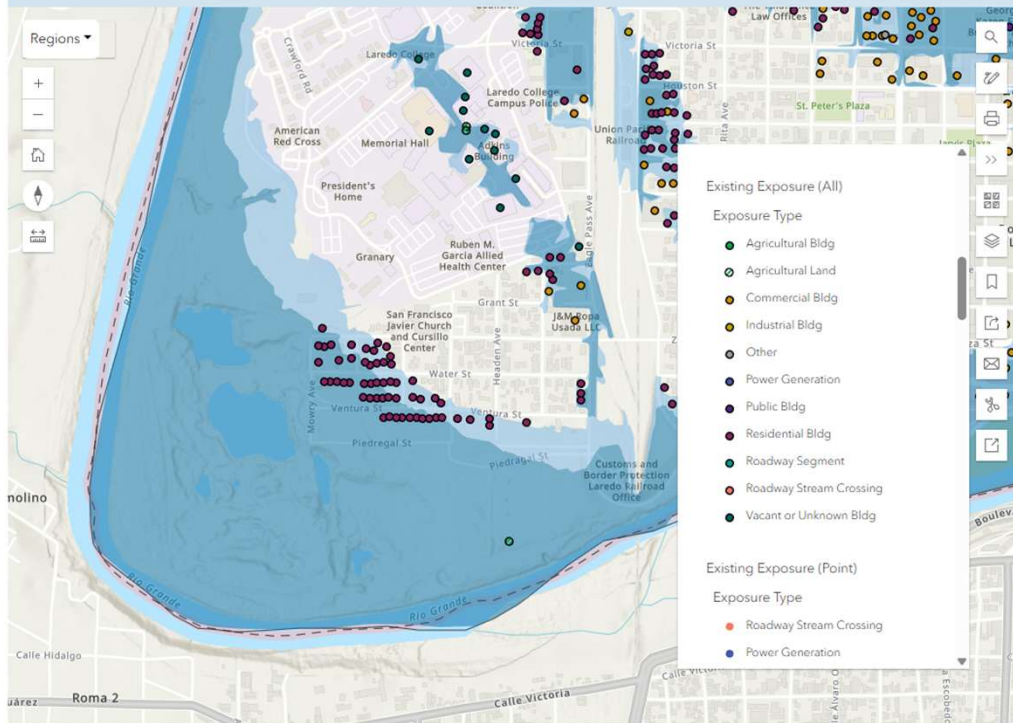


Interactive State Flood Plan Viewer

<https://texasstatefloodplan.org/>



Click on the map to view existing flood risk conditions submitted to the TWDB during the 2020-2023 planning cycle.



Key stats

Statewide	
Total count of low water crossing	9,330
Total count of structures	1,789,800
Total count of residential structures	1,402,000
Total count of roadway crossings	78,500
Total square miles of 1 percent floodplain	56,100
Total square miles of 0.2 percent floodplain	10,900
Total square miles of unknown floodplain	600
Total square miles of agricultural land	13,099,990
Total miles of impacted roadways	66,000
Total population of impacted structures	5,886,000
Total count critical facilities*	6,659

*Hospitals, emergency medical services, fire stations, police stations, and schools

**Due to rounding, numbers presented may not add up precisely to the totals provided and percentages may not precisely reflect the absolute figures.

- + Flood hazards
- + Exposure
- + Vulnerabilities

What's Next?

- Currently in the **second cycle** of flood planning.
- **\$38M** allocated to the RFPGs.
- Flood Management Evaluations for **Small/Rural Communities**
- Regional/State Flood Plan **Amendments**
- SFY 26-27 **Flood Infrastructure Fund**



Supporting Studies & Materials

1. [Flood Planning Geodatabase Templates](#): The TWDB generated template GIS geodatabases with multiple feature classes and tables for the RFPGs. Each planning group must fill the template geodatabase with relevant regional flood planning data. The template geodatabases are populated with feature classes and fields to match the specifications in Exhibit D: Data Submittal Guidelines. The geodatabase templates are being provided with the guidelines. (01/08/2025)
2. [Flood Planning Data Hub](#): To support the Regional Flood Planning Groups (RFPGs), the TWDB has assembled a wide array of flood-related data. The data, all of which come from publicly available sources, has been centralized into a single, easy-to-use [Data Hub](#). (01/08/2025)
3. [Benefit-Cost Analysis \(BCA\) Input Tool](#) and [Instructions](#): The TWDB funded and guided the development of a user-friendly benefit cost analysis (BCA) input interface in the form of a spreadsheet document. This is being provided alongside the guidelines. [Summary of updates \(01/26/2024\)](#)
4. [Infrastructure Assessment Toolkit](#): The TWDB funded and guided the development of an Infrastructure Assessment Toolkit to assist with the assessment of the condition and functionality of major constructed flood infrastructure in Texas.
 - [Infrastructure Assessment Classification Guidance](#): This document provides guidance on classifying the condition, functionality and data confidence rating of constructed and natural flood infrastructure. (04/03/2025)
 - [Infrastructure Assessment Toolkit](#): This is a spreadsheet-based resource designed for communities without a GIS-based inventory. (08/13/2025)
5. [Draft Floodplain Quilt](#): The floodplain quilt consists of multiple layers of data from various sources available throughout the state to 'quilt' together a single flood hazard dataset. The Quilt is only the starting point of flood hazard data for the RFPGs. RFPGs will need to review and potentially re-prioritize the quilt data as appropriate by location and incorporate additional information available in their respective regions. (1/27/2025)
6. [Cursory Floodplain Dataset - Future Conditions \(Year 2060\)](#): The TWDB flood planning division is worked with Fathom, Aqua Strategies (AS) and AECOM to develop future condition flood hazard coverage for the entire state of Texas for the year 2060. The analysis accounts for future climate variability and associated rainfall patterns; sea level rise, land subsidence and land use change. The dataset is a statewide set of 3-meter resolution flood hazard raster that includes



<https://www.twdb.texas.gov/flood/planning/planningdocu/2028/index.asp>

Questions?

Kevin Wessels
Manager,
Regional Flood Planning
kevin.wessels@twdb.texas.gov

